

RIKEN Clone ID : IRAK042N17

Vector : pCMV-SPORT6

Gene	FXR1	
Accession No.	BC028983.1	2668 bp
	<i>CDS</i>	1620 bp
		11..1630

● Plasmid DNA purification

Date : 12/2/18

Culture : LB (100 ug/ml Ampicillin) 5 ml -> at 37 deg C over night

Date : 12/2/19

Purification : QIAGEN Miniprep kit -> dH₂O 100 ul

● Digestion by restriction enzyme/Concentration calibration

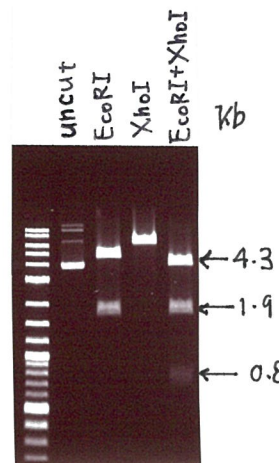
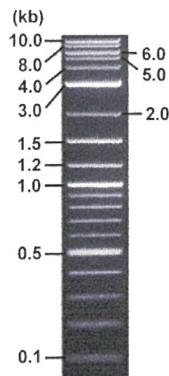
Date : 12/2/19

DNA concentration (O.D.): 74 ng/ul

DNA	0.6	ul
Enzyme (EcoRI + XhoI)	0.5 + 0.5	ul
Buffer H	1	ul
dH ₂ O	7.4	ul
Total	10	ul

Electrophoresis : 1% agarose gel, 1x TAE Buffer

Marker : 2-Log DNA Ladder (NEB#N3200L)



<Expected size of fragment from BC028983.1 >

4339, 1929, 782 bp

● Confirmation of the insertion sequence

Date : 13/01/10

Primer A	Reverse2
Primer B	M13
Primer C	-
List of Sequencing Primers	http://dna.brc.riken.jp/en/GNPclone3en.html

● Adjustment of DNA concentration

Shipping amount : 40 ul

Concentration at the time of preparation of plasmid DNA : 25 ng/ul

Date : 13/01/11

DNA (<u>74</u> ng/ul)	83.0	ul
10x TE	24.6	ul
dH ₂ O	138.1	ul
Total	245.7	ul



APPROVED BY :

<http://dna.brc.riken.jp/index.html>

S/N G:242 A:189 T:219 C:11 Primer A : Reverse2

KB.bcp

KB 1.4.1.8 Cap:7

5' GCGGATAACAATTTCACACAGG 3'

Vector

CAG FCA TTAG GCC TATT TTAG GT GTCACCTA TTA GAACA GCTTT GTCACAAA AAA GCA GGCCT GCTACCG GTTCCG GAAATTC CCGGGATTAT C GT CGACCCA CGCGTCCCG GTTC

attB1 51

61 kpm I

71 EcoRI

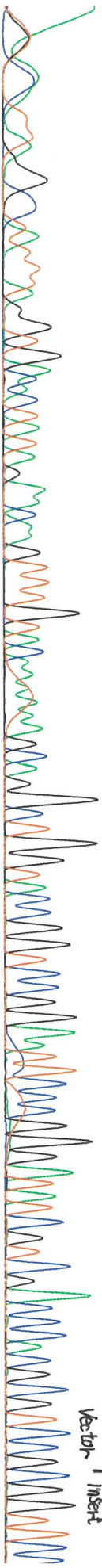
SmaI 81

Fork V

SalI 91

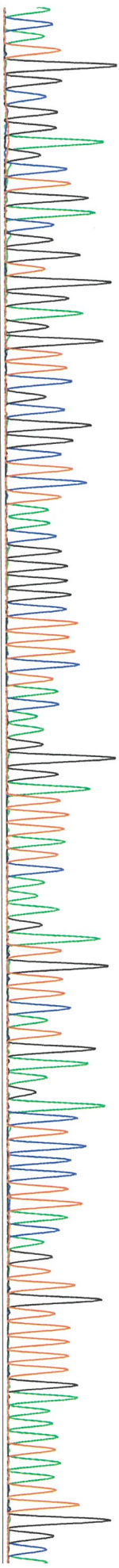
101

Insert



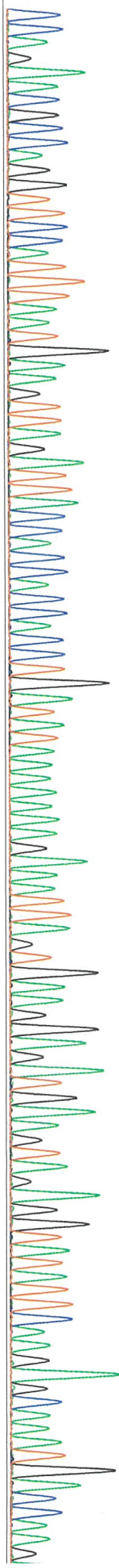
ACATGGCGGAGCTGACGGTG GAGGTTCCGGCTCTAACGGGGCTTTCTACAAGGATTTATCAA GATGTTCA TGAA GACTCCCTTACAGTTGTTT GAATAAT AATT GGC

L 121 131 141 151 161 171 181 191 201 211 221



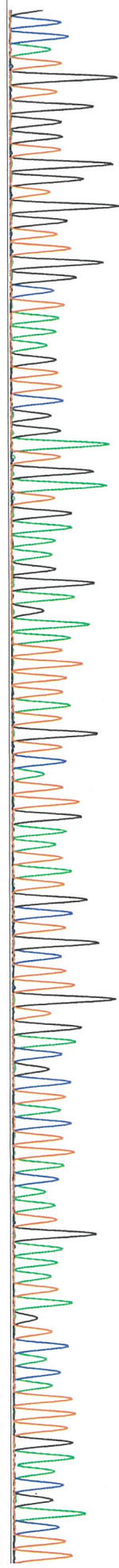
CCA GAACGCCAG GTTCCATT TAAT GAA GTTAG ATTACC CAACA CCACTGATATAAAA AAGAAATTA GTGAAGA GATGA AGTA GAAGGTAT ATCAA GAGCAAA TAG ACCAA G

231 241 251 261 271 281 291 301 311 321 331



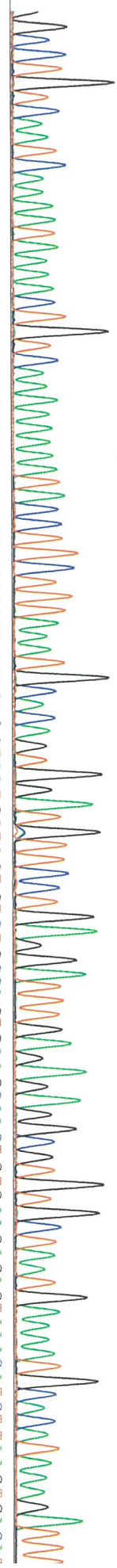
3CCATGTGGTGGTGGT TGGCTAAAGTTC GGATGATG AAAAGGAG AATTTAT GTCATTG AATTAT GCTGCTT GTGACGCTACTTACAATGA AATAGTCA CATTTGAACGACTT

341 351 361 371 381 391 401 411 421 431 441



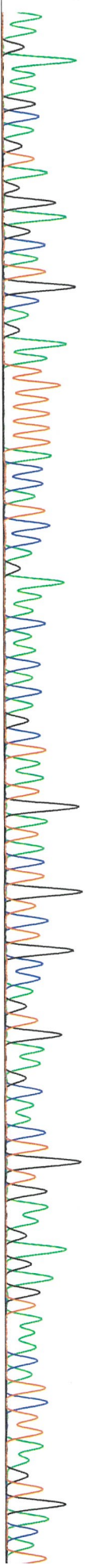
GGCCTGTCAA TCCAAA AATAAAACTGTCA AAAA AATAACCTTCTTTAATGCACAGTGGATGTT CCTGAGGATTTGAGAGGAGGCGTGGCTAA TGA AATGCACA TAAAGATT

31 461 471 481 491 501 511 521 531 541 551 561



AA GAAAGCA GTA GAGCAT GCAGAATT TTTT ACCCAT CCA GAAACA CACA GCTAATGATTA CTGTCCCA GTGAAGCA AACTGTAAAGAGCA

571 581 591 601 611 621 631 641 651 661 671



0 535 1070

S/N G:324 A:315 T:422 C:274
 KB.bcp
 KB 1.4.1.8 Cap:4

IRAK042N17_M13(-40)_B07_04
 IRAK042N17_M13(-40)
 KB_3500_POP7_BDTV3.mob
 Pts 1429 to 14123 Pk1 Loc:1406
 Version 5.4 HISQV Bases: 999

Inst Model/Name 3500/3500 Instrument
 Jan 10,2013 10:42AM, JST
 Jan 10,2013 11:09AM, JST
 Spacing:12.48 Pts/Panel/350
 Plate Name: 20130110_mix

