

RIKEN Clone ID : IRAK029O09

Lot#: 7893_A4Jf

Vector : pCMV-SPORT6

Gene	HNRPM	
Accession No.	BC019580.1	2542 bp
		1..2542
	<i>CDS</i>	2193 bp
		10..2202

● Plasmid DNA purification

Date : 141015

Culture : LB (100 ug/ml Ampicillin) 5 ml -> at 37 deg C over night

Date : 141016

Purification : QIAGEN Miniprep kit -> dH₂O 100 ul

● Digestion by restriction enzyme/Concentration calibration

Date : 141016

DNA concentration (O.D.): 222 ng/ul

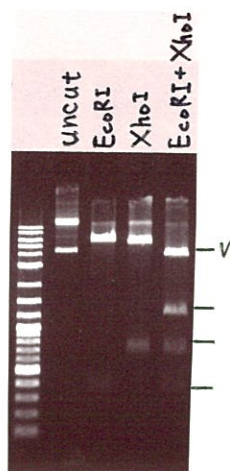
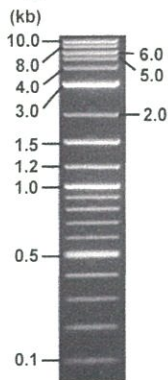
< Size of fragment expected from IRAK029O09 >

DNA	0.2	ul
Enzyme (EcoRI + XhoI)	0.5 + 0.5	ul
Buffer H	1	ul
dH ₂ O	7.8	ul
Total	10	ul

EcoRI	6541, 383 bp
XhoI	6096, 789, 39 bp
EcoRI + XhoI	4339bp (Vector) 1374, 789, 383, 39 bp

Electrophoresis : 1% agarose gel, 1x TAE Buffer

Marker : 2-Log DNA Ladder (NEB#N3200L)



● Adjust plasmid DNA solution to 25 ng/ul

Date : 141023

DNA (<u>222</u> ng/ul)	<u>80.0</u>	ul
10x TE	<u>71.0</u>	ul
dH ₂ O	<u>559.4</u>	ul
Total	<u>710.4</u>	ul

● Confirmation of the insertion sequence

Date : 141023

Primer A	Reverse2
Primer B	M13
Primer C	poly(A) region primer #0
List of Sequencing Primers	http://dna.brc.riken.jp/en/GNPclone3en.html

● Shipping

Conc. : 25 ng/ul, Volume : 40 ul
 ~~Conc. : 25 ng/ul, Volume : 40 ul~~

APPROVED BY :

<http://dna.brc.riken.jp/index.html>





Project : GNP

Sample : IRAK029O09_A4Jf_Reverse2.A03_14102310X5

Result : IRAK029O09_A4Jf_Reverse2.A03_14102310X5

System : CEQ System

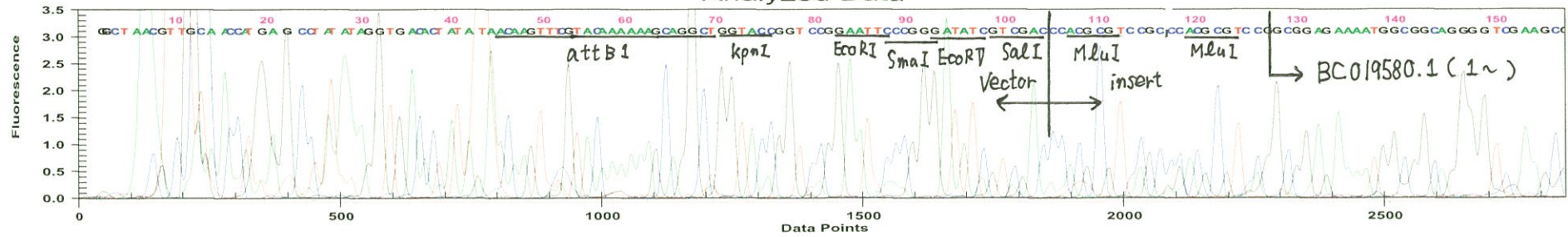
Primer A : Reverse2

5' GCGGATAACAATTTTCACACAGG 3'

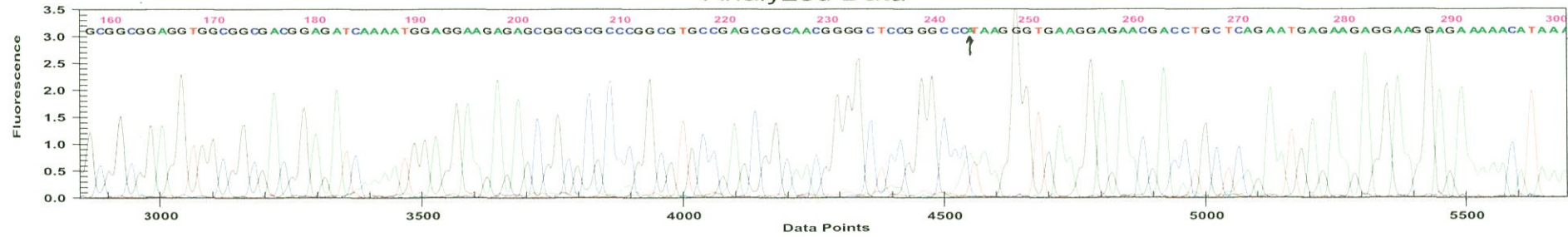
Operator : 2.141023.furu

Instrument : CEQ System (Ver. 9.0.25)

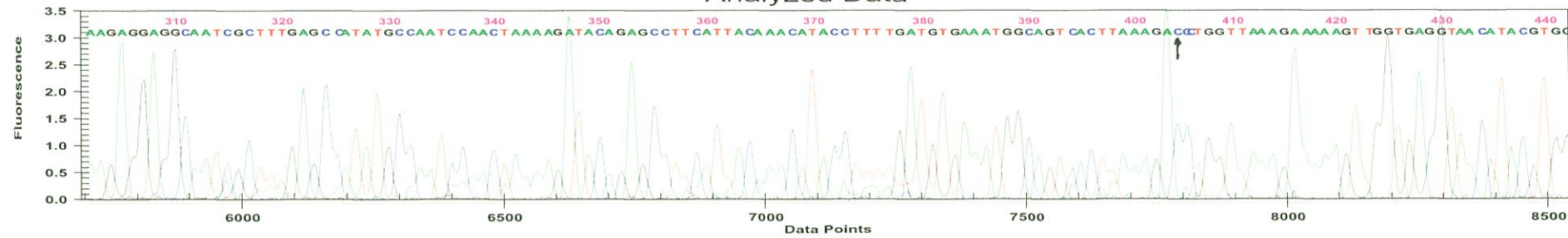
Analyzed Data



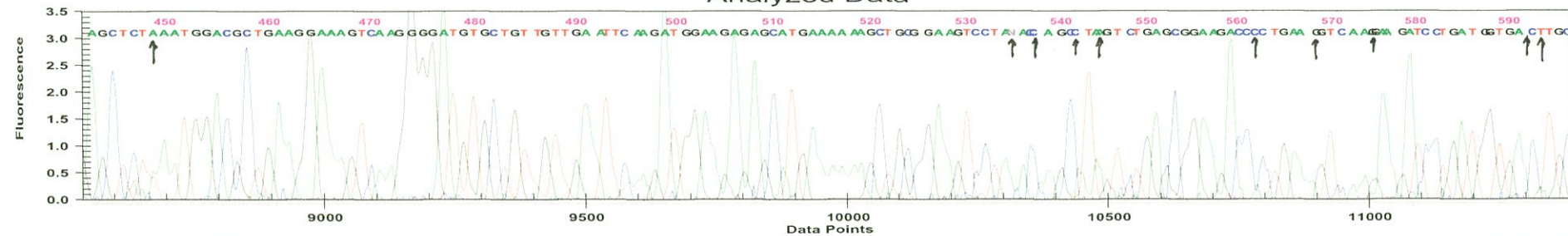
Analyzed Data



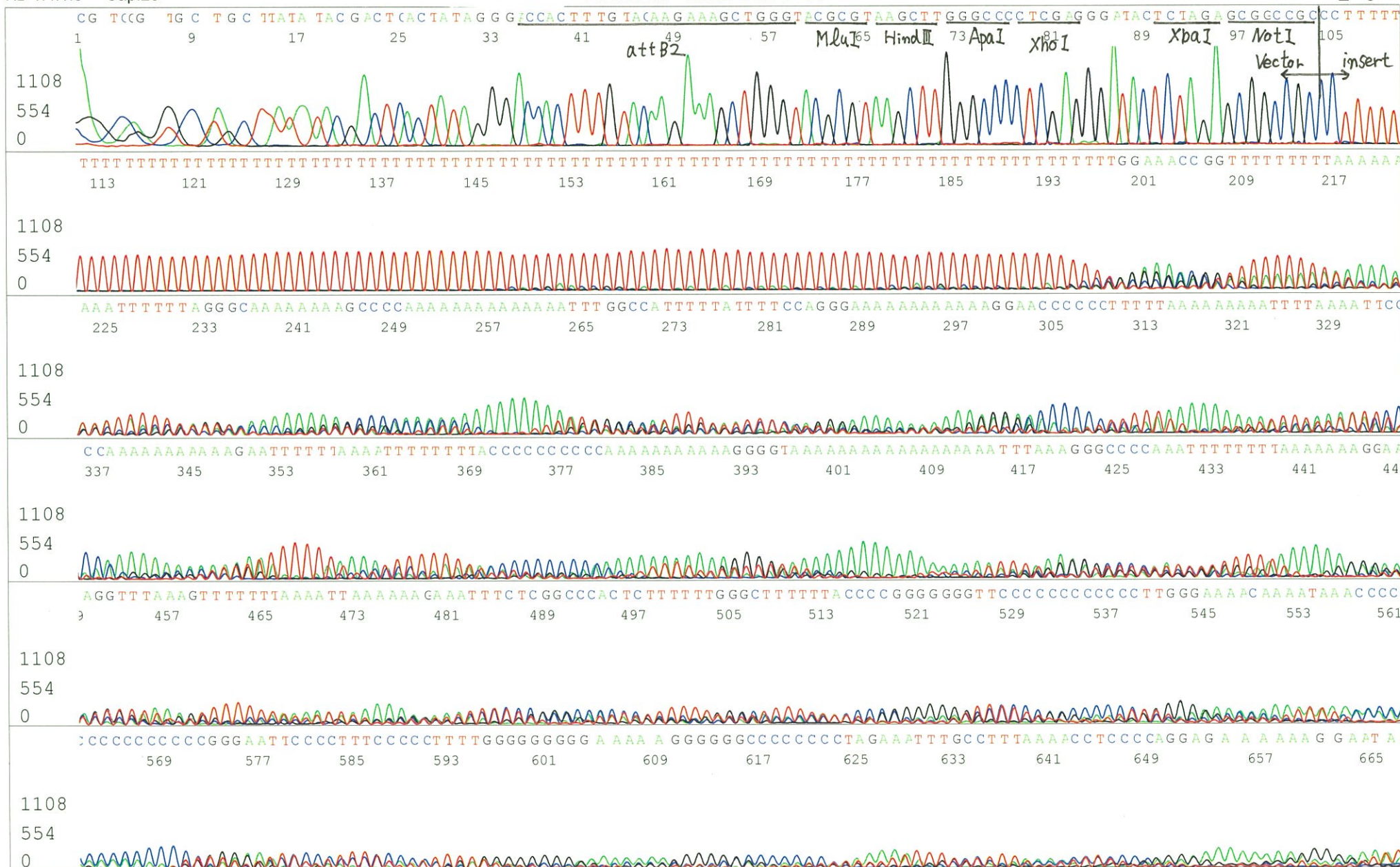
Analyzed Data



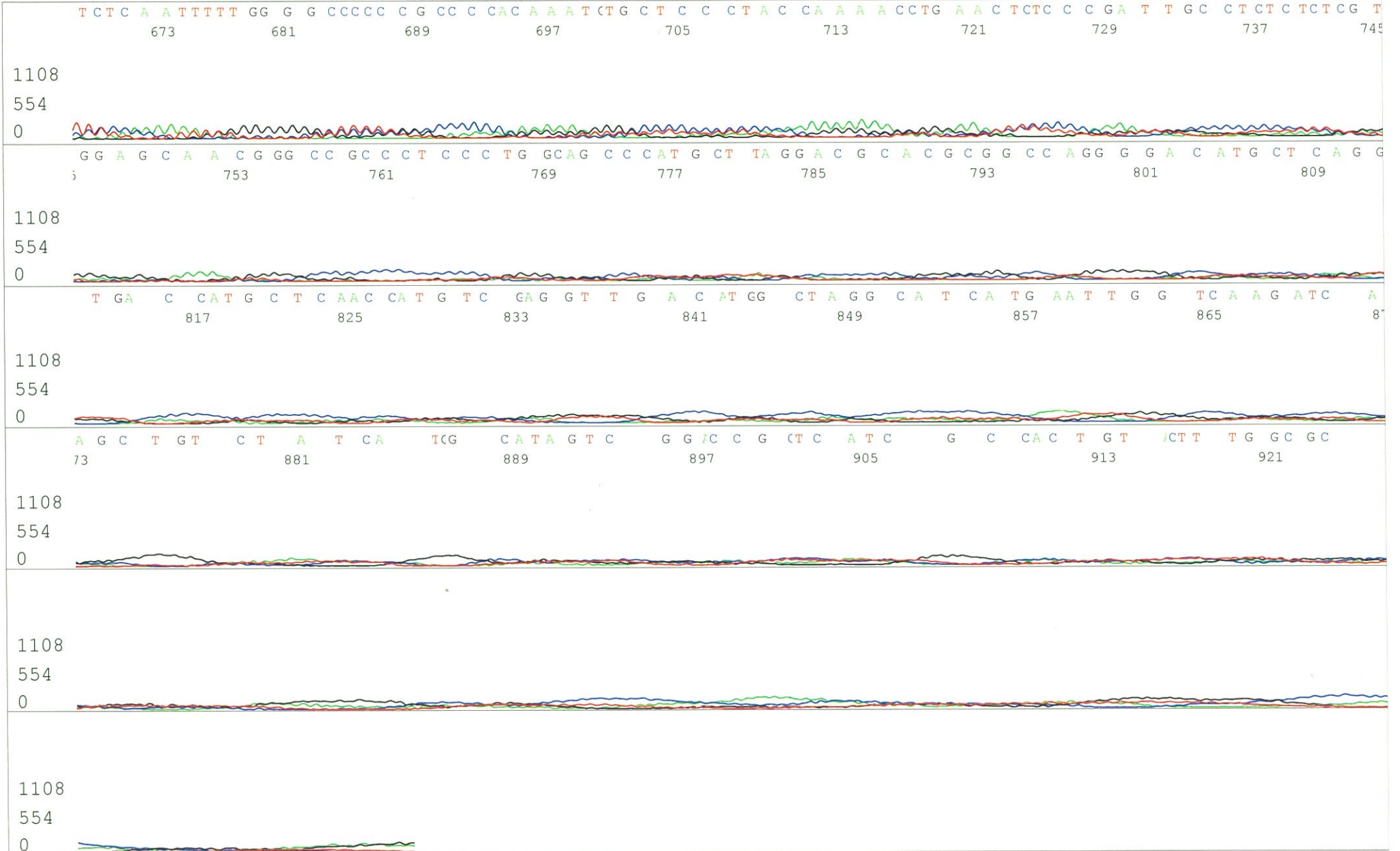
Analyzed Data



S/N G:49 A:53 T:70 C:53 Primer B : M13
KB.bcp
KB 1.4.1.8 Cap:23 5' GTTTTCCCAGTCACGACGTTGTA 3'



S/N G:49 A:53 T:70 C:53
KB.bcp
KB 1.4.1.8 Cap:23



S/N G:46 A:39 T:24 C:34

Primer C : Poly(A) region primer #0

IRAK029O09_A4Jf_GNPmixture

Oct 17, 2014 09:47AM, JST

KB.bcp

KB_3500_POP7_BDTv3.mob

Oct 17, 2014 10:13AM, JST

KB 1.4.1.8 Cap:24

5' TTTTTTTTTTTTTTTTTTTTTTNNN 3'

Pts 1304 to 13432 Pk1 Loc:1281

Spacing:11.7 Pts/Panel1350

Version 5.4 HiSQV Bases: 1036

Plate Name: 20141017_mix

