

RIKEN Clone ID : IRAK026K20

Lot#: 7893_A5Ds

Vector : pCMV-SPORT6

Gene	CANX	
Accession No.	BC042843.1	4159 bp
	CDS	1779 bp

● Plasmid DNA purification

Date : 150430

Culture : LB (100 ug/ml Ampicillin) 5 ml -> at 37 deg C over night

Date : 150501

Purification : QIAGEN Miniprep kit -> dH₂O 100 ul

● Digestion by restriction enzyme/Concentration calibration

Date : 150501

DNA concentration (O.D.): 76 ng/ul

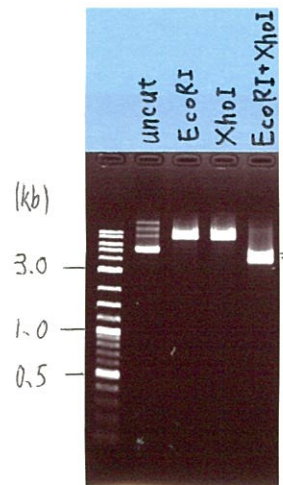
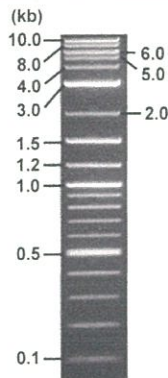
< Size of fragment expected from this clone >

DNA	0.65	ul
Enzyme (EcoRI + XhoI)	0.5 + 0.5	ul
Buffer H		1 ul
dH ₂ O	7.35	ul
Total		10 ul

EcoRI	8.5 kb
XhoI	8.5 kb
EcoRI + XhoI	4.3kb (Vector) 4.2kb

Electrophoresis : 1% agarose gel, 1x TAE Buffer

Marker : 2-Log DNA Ladder (NEB#N3200L)



● Adjust plasmid DNA solution to 25 ng/ul

Date : 150511

DNA (<u>76</u> ng/ul)	<u>78.0</u>	ul
10x TE	<u>23.7</u>	ul
dH ₂ O	<u>135.4</u>	ul
Total	<u>237.1</u>	ul

● Confirmation of the insertion sequence

Date : 150508

Primer A	Reverse2
Primer B	M13
Primer C	poly(A) region primer #0
List of Sequencing Primers	http://dna.brc.riken.jp/en/GNPclone3en.html

● Shipping

Conc. : 25 ng/ul, Volume : 40 ul

Conc. : ng/ul, Volume : ul

APPROVED BY :

<http://dna.brc.riken.jp/index.html>



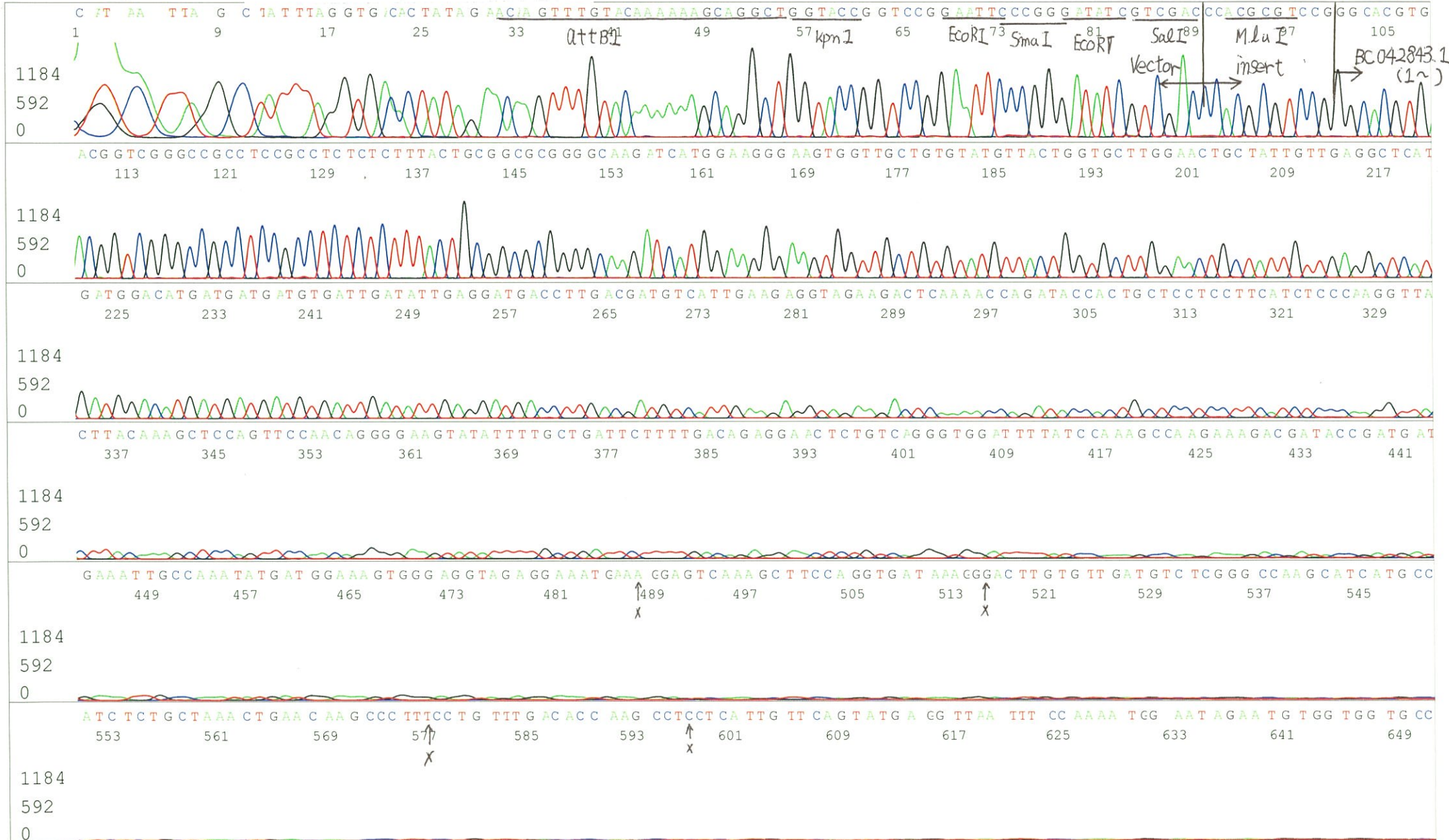
S/N G:568 A:317 T:223 C:269
KB.bcp
KB 1.4.1.8 Cap:1

Primer A : Reverse2

5' GCGGATAACAATTTTCACACAGG 3'

IRAK026K20_A5Ds_Reverse2_A07_01
IRAK026K20_A5Ds_Reverse2
KB_3500_POP7_BDTv3.mob
Pts 1974 to 12422 Pk1 Loc:1951
Version 6.0 HiSQV Bases: 622

Inst Model/Name 3500/3500 Instrument
May 08,2015 02:18PM, JST
May 08,2015 02:44PM, JST
Spacing:11.34 Pts/Panel1350
Plate Name: 20150508_GNP



S/N G:568 A:317 T:223 C:269
KB.bcp
KB 1.4.1.8 Cap:1



S/N G:764 A:757 T:491 C:457

IRAK026K20_A5Ds_M13(-40)

May 08,2015 02:18PM, JST

KB.bcp

KB_3500_POP7_BDTv3.mob

May 08,2015 02:44PM, JST

KB 1.4.1.8 Cap:4

Primer B : M13

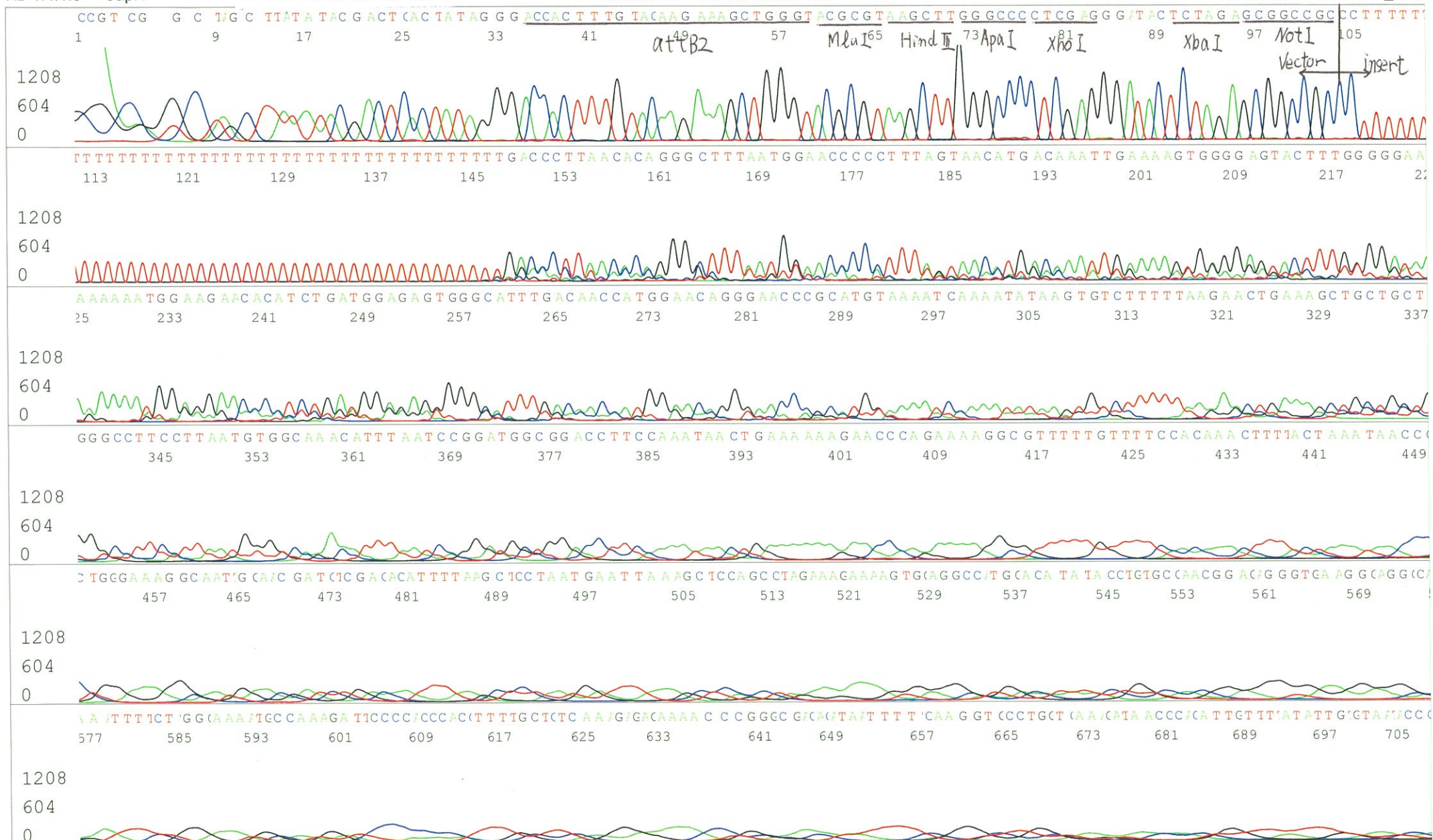
Pts 1940 to 12678 Pk1 Loc:1917

Spacing:13.25 Pts/Panel1350

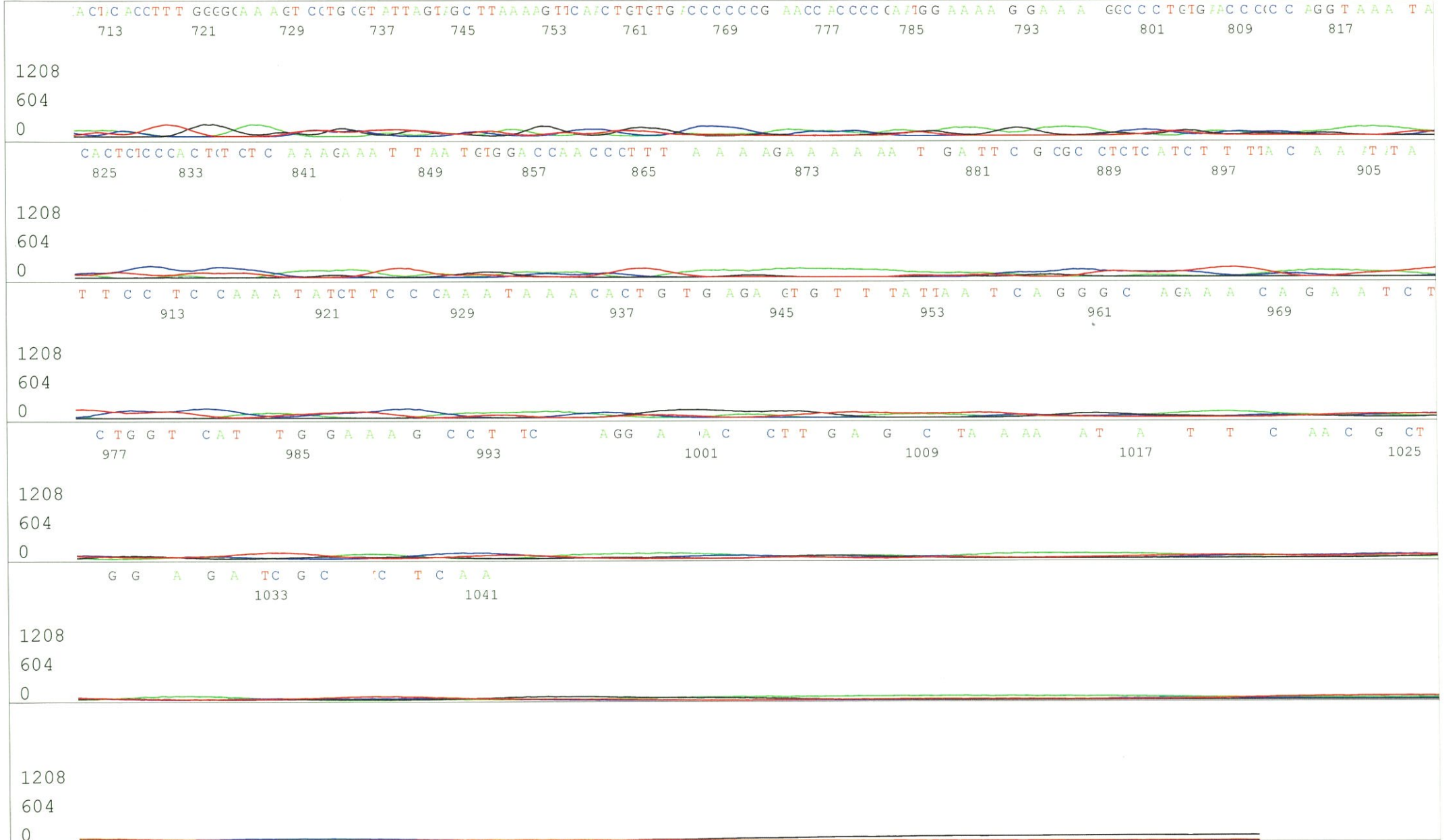
5' GTTTTCCCAGTCACGACGTTGTA 3'

Version 6.0 HiSQV Bases: 295

Plate Name: 20150508_GNP

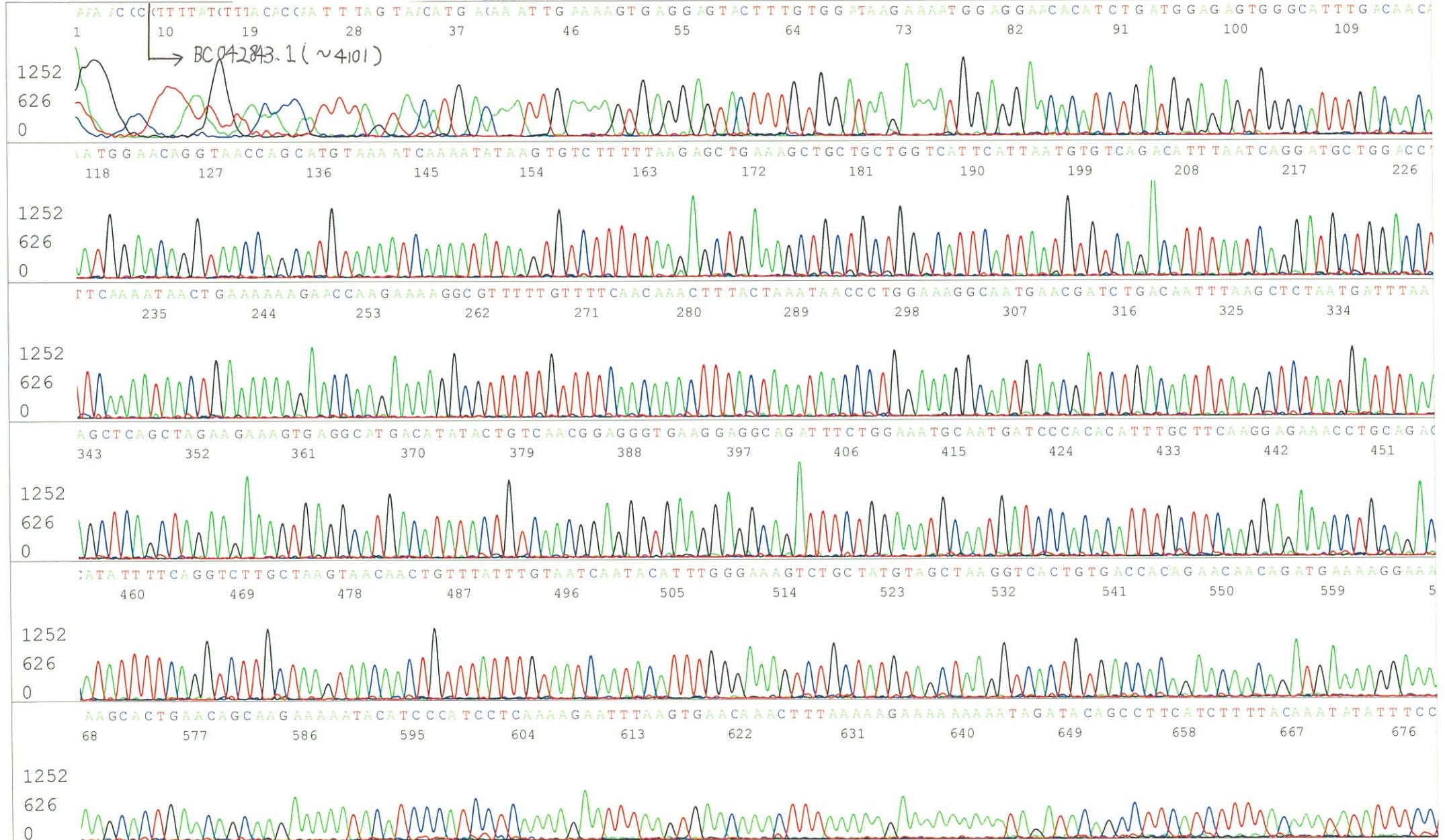


S/N G:764 A:757 T:491 C:457
KB.bcp
KB 1.4.1.8 Cap:4



S/N G:32 A:29 T:19 C:15
KB.bcp
KB 1.4.1.8 Cap:7

Primer C : Poly(A) region primer #0
5' TTTTTTTTTTTTTTTTTTTTTTTNNN 3'



S/N G:32 A:29 T:19 C:15
KB.bcp
KB 1.4.1.8 Cap:7

