

RIKEN Clone ID : IRAK021P08

Lot#: 7893_A7F8

Vector : pCMV-SPORT6

Gene	RAB7	
Accession No.	BC013728.1	1358 bp
	<i>CDS</i>	624 bp

● Plasmid DNA purification

Date : 170608

Culture : LB (100 ug/ml Ampicillin) 5 ml -> at 37 deg C over night

Date : 170613

Purification : QIAGEN Miniprep kit -> dH₂O 100 ul

● Digestion by restriction enzyme/Concentration calibration

Date : 170613

DNA concentration (O.D.): 88 ng/ul

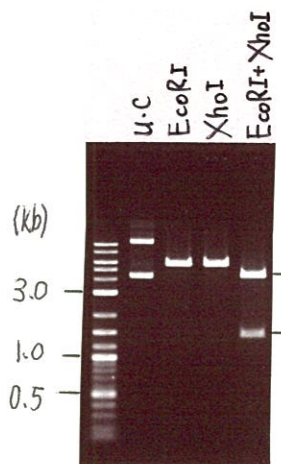
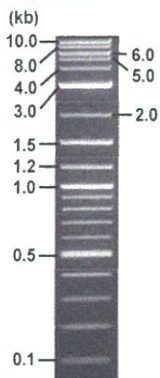
< Size of fragment expected from this clone >

DNA	1	ul
Enzyme (EcoRI + XhoI)	0.5 + 0.5	ul
Buffer H	1	ul
dH ₂ O	7	ul
Total	10	ul

EcoRI	5.7 kb
XhoI	5.7 kb
EcoRI + XhoI	4.3kb (Vector) 1.4 kb

Electrophoresis : 1% agarose gel, 1x TAE Buffer

Marker : 2-Log DNA Ladder (NEB#N3200L)



● Confirmation of the insertion sequence

Date : 170614

● Adjust plasmid DNA solution to 25 ng/ul

Date : 170621

DNA (<u>88</u> ng/ul)	74	ul
10x TE	26	ul
dH ₂ O	160.4	ul
Total	260.4	ul

Primer A	Reverse2
Primer B	M13
Primer C	poly(A) region primer #0
List of Sequencing Primers	http://dna.brc.riken.jp/en/GNPclone3en.html

● Shipping

- Conc. : 25 ng/ul, Volume : 40 ul
- Conc. : ng/ul, Volume : ul



APPROVED BY : <http://dna.brc.riken.jp/index.html>

S/N G:273 A:343 T:249 C:368

Primer A : Reverse2

IRAK021P08_A7F8_Reverse2

Jun 14,2017 02:09PM, JST

KB.bcp

KB_3500_POP7_BDTv3.mob

Gray line indicates quality value

Jun 14,2017 02:24PM, JST

KB 1.4.1.8 Cap:16

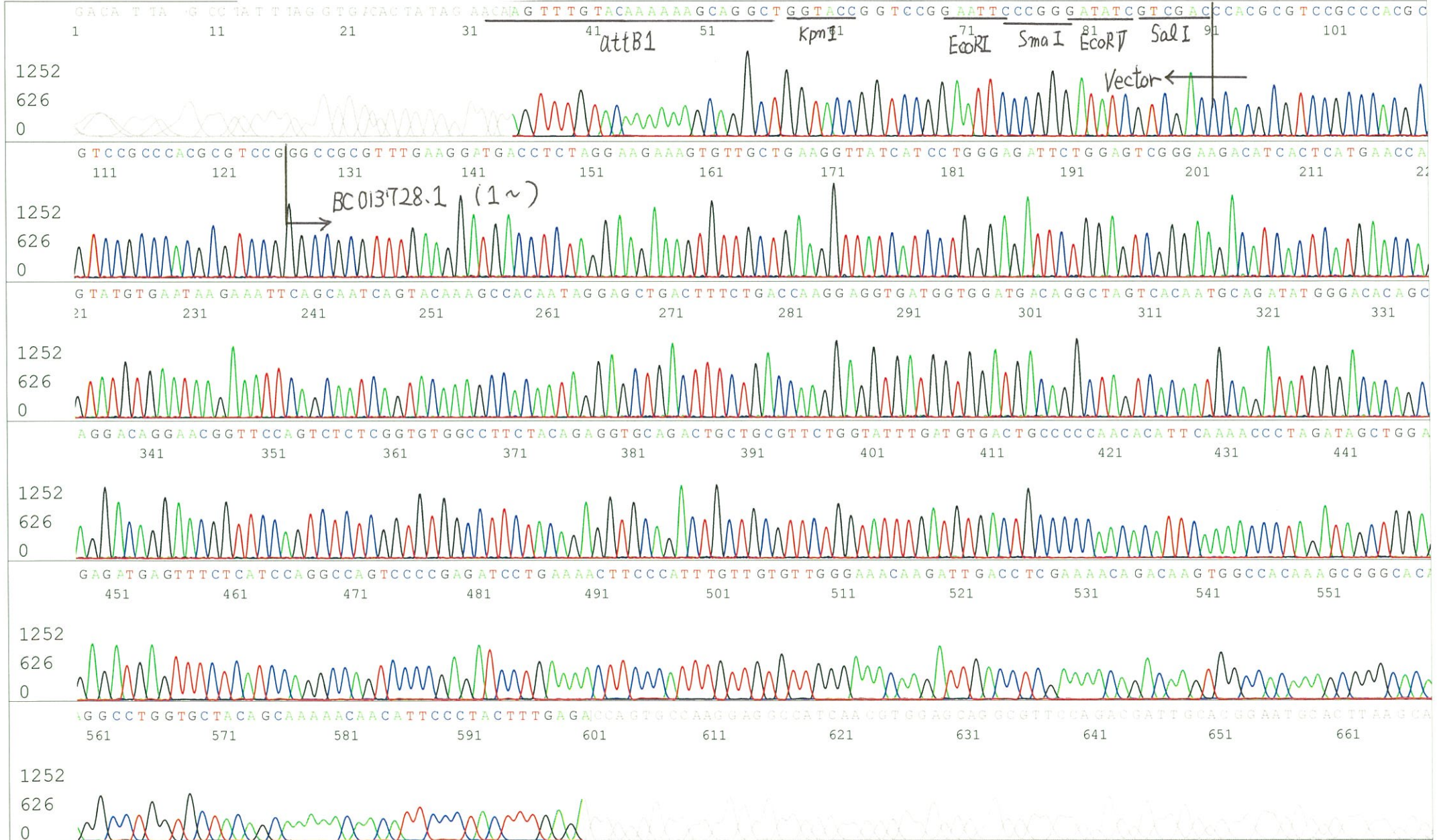
5' GCGGATAACAATTTTCACACAGG 3'

Pts 1741 to 8706 Pk1 Loc:1709

(QV) < 40.

Spacing:10.66 Pts/Panel1350

Plate Name: 20170614_GNP



S/N G:121 A:161 T:162 C:162

Primer B : M13

IRAK021P08_A7F8_M13(-40)

KB_3500_POP7_BDTv3.mob

Gray line indicates quality value

Jun 14,2017 02:09PM, JST

Jun 14,2017 02:24PM, JST

KB.bcp

Pts 1745 to 8706 Pk1 Loc:1713

Spacing:10.78 Pts/Panel1350

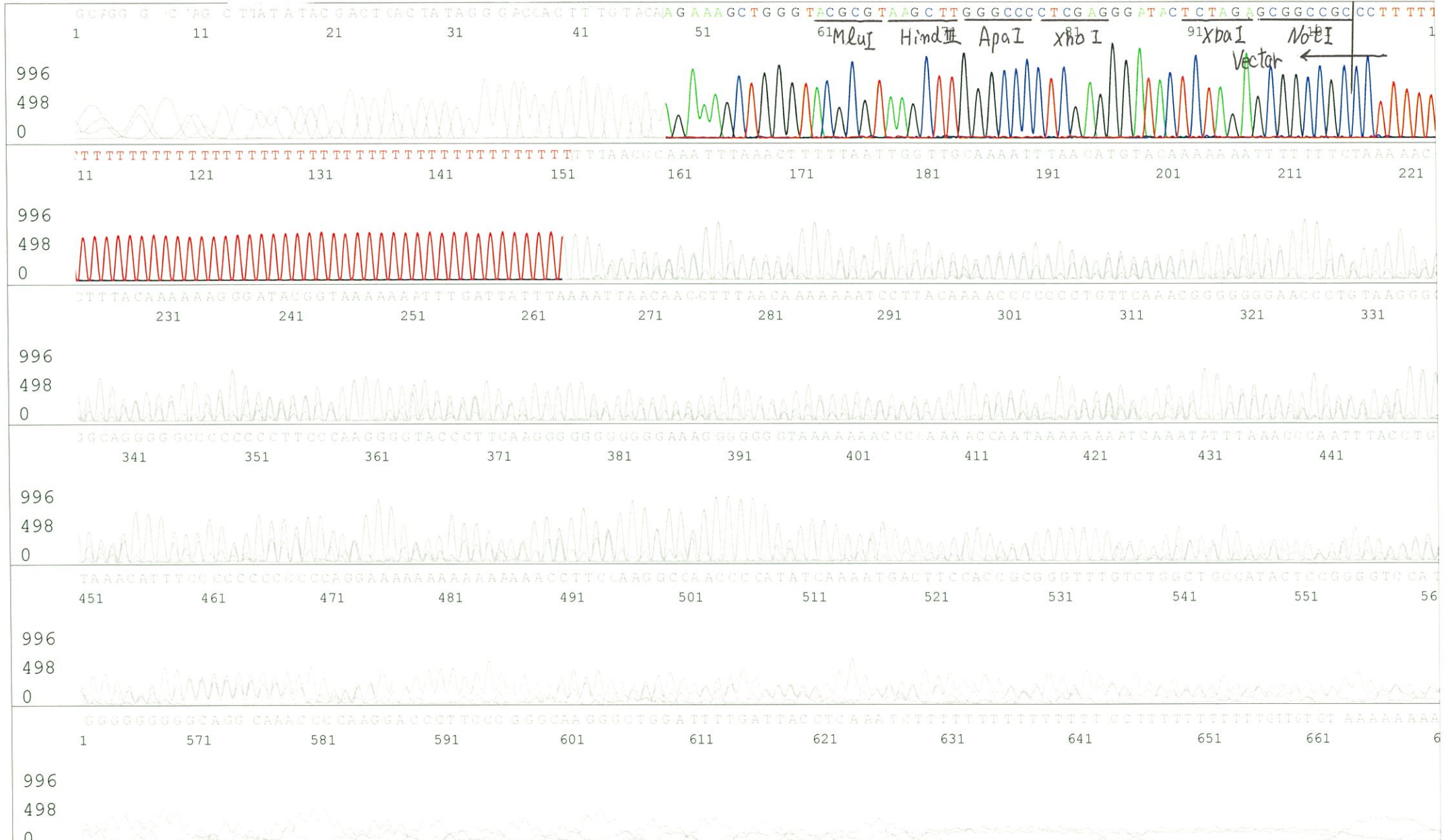
KB 1.4.1.8 Cap:19

5' GTTTTTCCCAGTCACGACGTTGTA 3'

Version 6.0 HiSQV Bases: 262

(QV) < 40.

Plate Name: 20170614_GNP



S/N G:66 A:94 T:86 C:85

Primer C : Poly(A) region primer #0

IRAK021P08_A7F8_GNPmixture

Jun 14,2017 02:09PM, JST

KB.bcp

KB_3500_POP7_BDTv3.mob

Gray line indicates quality value

Jun 14,2017 02:24PM, JST

KB 1.4.1.8 Cap:22

5' TTTTTTTTTTTTTTTTTTTTNNN 3'

Pts 1750 to 8706 Pk1 Loc:1718

(QV) < 40.

Spacing:10.62 Pts/Panel1350

Version 6.0 HiSQV Bases: 704

Plate Name: 20170614_GNP

