

**RIKEN Clone ID : IRAK013C20**

Lot#: 7893\_A4Jh

Vector : pCMV-SPORT6

Gene	VPS33A	
Accession No.	BC016617.1	2536 bp
	<i>CDS</i>	1791 bp
		1..2536
		22..1812

● Plasmid DNA purification

Date : 141020

Culture : LB (100 ug/ml Ampicillin) 5 ml -> at 37 deg C over night

Date : 141021

Purification : QIAGEN Miniprep kit -> dH<sub>2</sub>O 100 ul

● Digestion by restriction enzyme/Concentration calibration

Date : 141021

DNA concentration (O.D.): 43 ng/ul

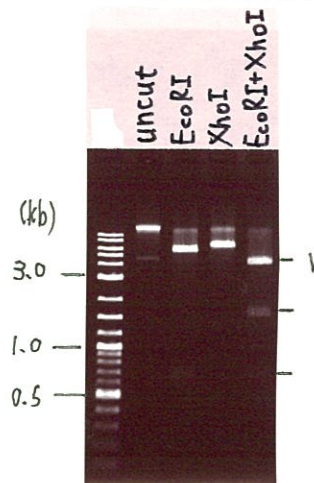
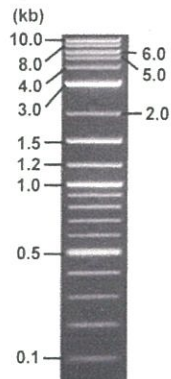
< Size of fragment expected from IRAK013C20 >

DNA	1	ul
Enzyme (EcoRI + XhoI)	0.5 + 0.5	ul
Buffer H	1	ul
dH <sub>2</sub> O	7	ul
Total	10	ul

EcoRI	6008, 694, 216 bp
XhoI	6918 bp
EcoRI + XhoI	4339bp (Vector) 1669, 694, 216 bp

Electrophoresis : 1% agarose gel, 1x TAE Buffer

Marker : 2-Log DNA Ladder (NEB#N3200L)



● Adjust plasmid DNA solution to 25 ng/ul

Date : 141029

● Confirmation of the insertion sequence

Date : 141029

DNA ( <u>43</u> ng/ul)	58.0	ul
10x TE	10.0	ul
dH <sub>2</sub> O	31.8	ul
Total	99.8	ul

Primer A	Reverse2
Primer B	M13
f Primer C : Poly(A) region primer #0	
List of Sequencing Primers	<a href="http://dna.brc.riken.jp/en/GNPclone3en.html">http://dna.brc.riken.jp/en/GNPclone3en.html</a>

● Shipping

Conc. : 25 ng/μl, Volume : 40 μl

~~Conc. : ng/μl, Volume : μl~~

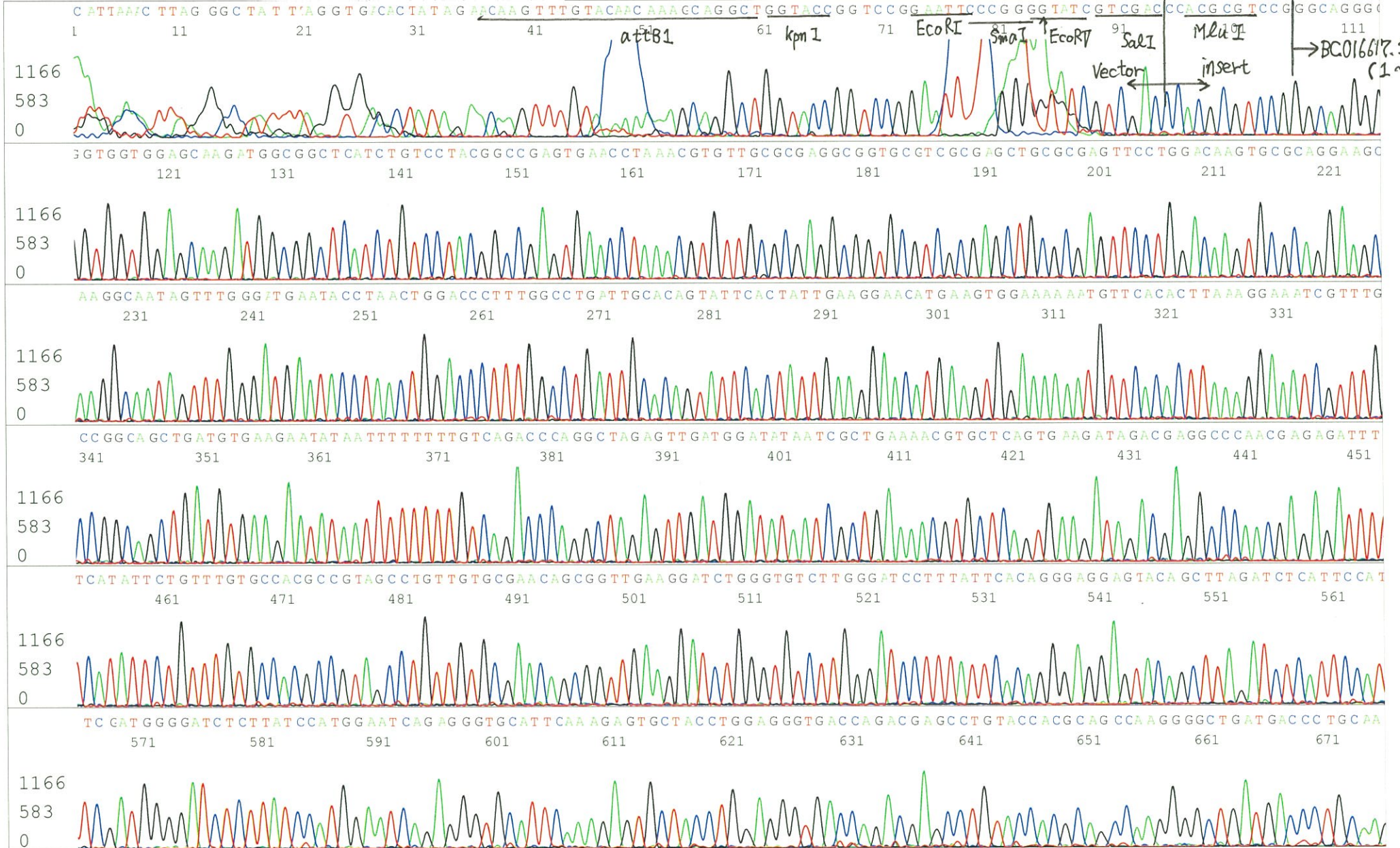


APPROVED BY :

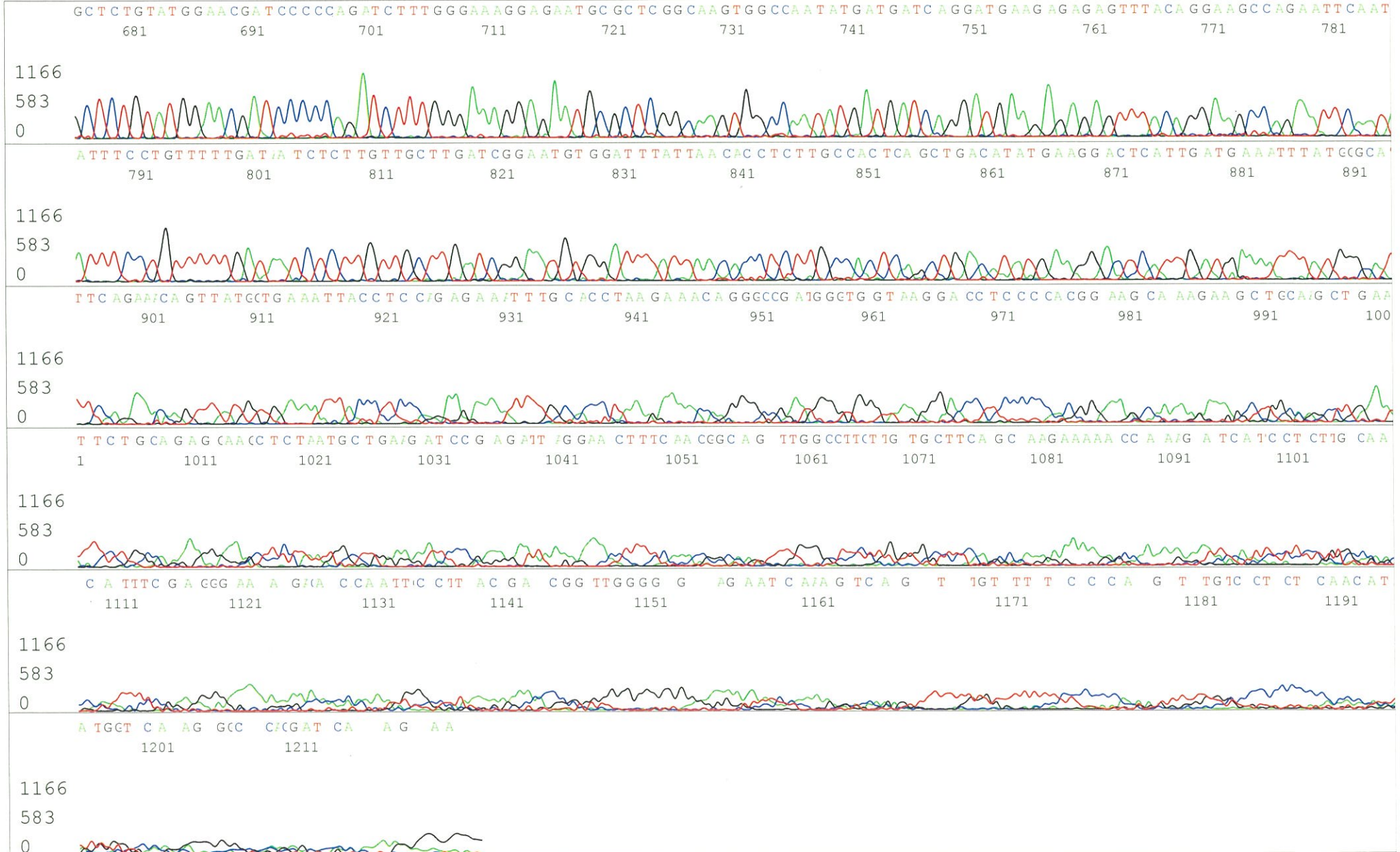
<http://dna.brc.riken.jp/index.html>

S/N G:16 A:19 T:13 C:19  
KB.bcp  
KB 1.4.1.8 Cap:12

Primer A : Reverse2  
5' GCGGATAACAATTTTCACACAGG 3'



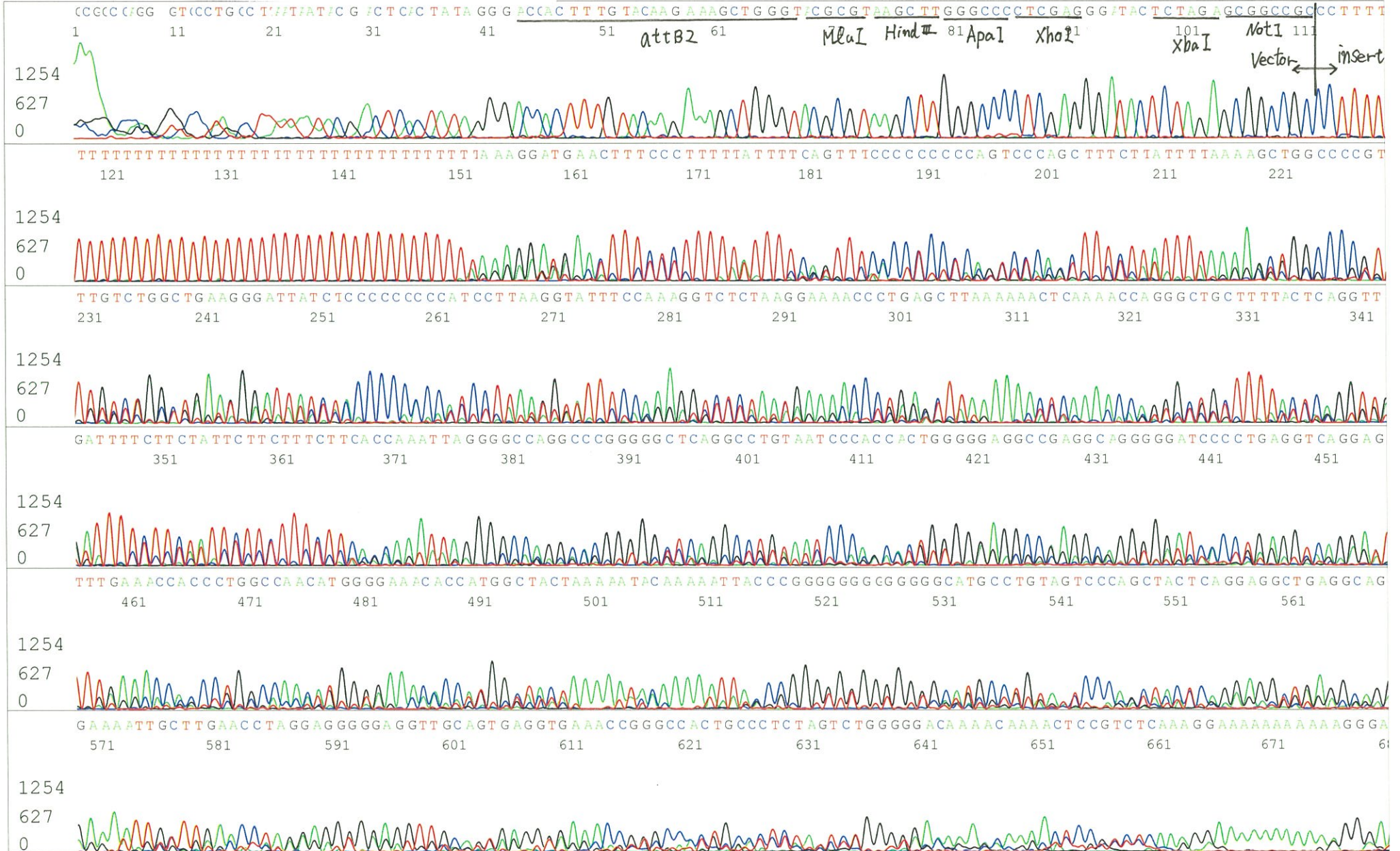
S/N G:16 A:19 T:13 C:19  
KB.bcp  
KB 1.4.1.8 Cap:12



S/N G:14 A:15 T:15 C:13  
KB.bcp  
KB 1.4.1.8 Cap:3

Primer B : M13

5' GTTTCCAGTCACGACGTTGTA 3'



S/N G:14 A:15 T:15 C:13  
KB.bcp  
KB 1.4.1.8 Cap:3



S/N G:125 A:102 T:65 C:59

Primer C : Poly(A) region primer #0

IRAK013C20\_A4Jh\_GNPmixture

Oct 29,2014 11:40AM, JST

KB.bcp

KB\_3500\_POP7\_BDTv3.mob

Oct 29,2014 12:06PM, JST

KB 1.4.1.8 Cap:3

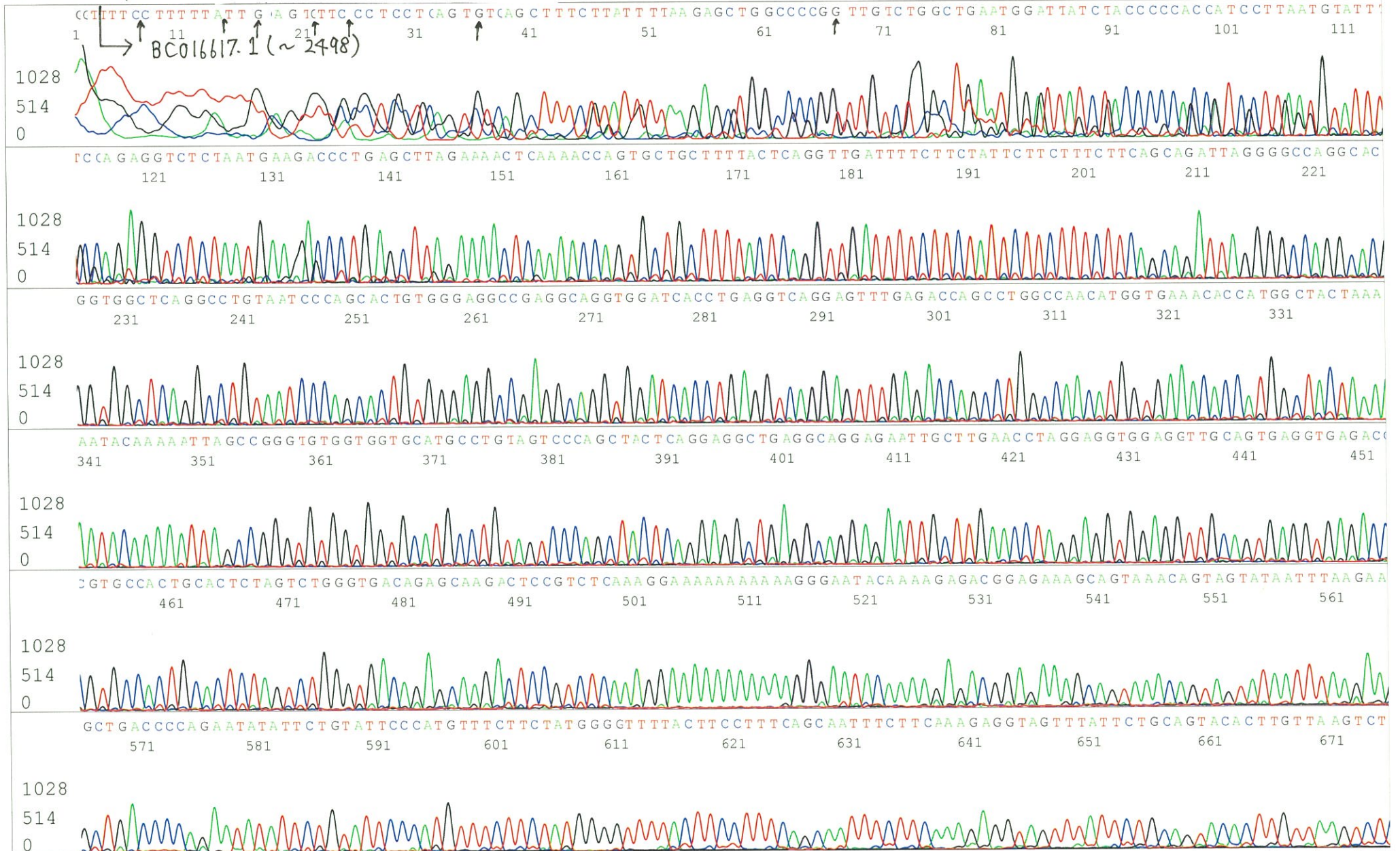
5' TTTTTTTTTTTTTTTTTTTTTNNN 3'

Pts 1316 to 12721 Pk1 Loc:1293

Spacing:11.31 Pts/Panel1350

Version 5.4 HiSQV Bases: 921

Plate Name: 20141029\_mix



S/N G:125 A:102 T:65 C:59

IRAK013C20\_A4Jh\_GNPmixture

Oct 29,2014 11:40AM, JST

KB.bcp

KB\_3500\_POP7\_BDTv3.mob

Oct 29,2014 12:06PM, JST

KB 1.4.1.8 Cap:3

Pts 1316 to 12721 Pk1 Loc:1293

Spacing:11.31 Pts/Panel1350

Version 5.4 HiSQV Bases: 921

Plate Name: 20141029\_mix

