

**RIKEN Clone ID : IRAK012G02**

Lot#: 7893\_A8HI

Vector : pCMV-SPORT6

Gene	AP1G1	
Accession No.	BC036283.1	4810 bp
	CDS	2478 bp

● Plasmid DNA purification

Date : 180822

Culture : LB (100 ug/ml Ampicillin) 5 ml → at 37 deg C over night

Date : 180823

Purification : QIAGEN Miniprep kit → dH<sub>2</sub>O 100 ul

● Digestion by restriction enzyme/Concentration calibration

Date : 180823

DNA concentration (O.D.): 78 ng/ul

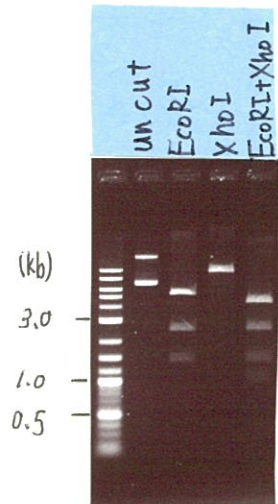
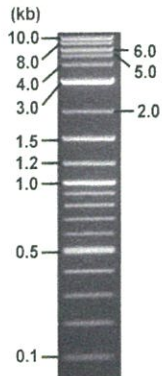
< Size of fragment expected from this clone >

DNA	<u>1.3</u> ul
Enzyme (EcoRI + XhoI)	0.5 + 0.5 ul
Buffer H	1 ul
dH <sub>2</sub> O	<u>6.7</u> ul
Total	10 ul

EcoRI	5.3 , 2.5, 1.4 kb
XhoI	9.2 kb
EcoRI + XhoI	4.3kb (Vector)      2.5, 1.4, 1.0 kb

Electrophoresis : 1% agarose gel, 1x TAE Buffer

Marker : 2-Log DNA Ladder (NEB#N3200L)



● Adjust plasmid DNA solution to 25 ng/ul

Date : 180903

DNA ( <u>78</u> ng/ul)	<u>85.0</u> ul
10x TE	<u>26.5</u> ul
dH <sub>2</sub> O	<u>153.7</u> ul
Total	<u>265.2</u> ul

● Confirmation of the insertion sequence

Date : 180828

Primer A	Reverse2
Primer B	M13
Primer C	-
List of Sequencing Primers	<a href="http://dna.brc.riken.jp/en/GNPclone3en.html">http://dna.brc.riken.jp/en/GNPclone3en.html</a>

● Shipping

Conc. : 25 ng/ul, Volume : 40 ul

Conc. :      ng/ul, Volume :      ul



S/N G:133 A:170 T:149 C:236  
KB.bcp  
KB 1.4.1.8 Cap:22

Primer A : Reverse2  
5' GCGGATAACAATTTTCACACAGG 3'

Gray line indicates quality value (QV) < 40.

