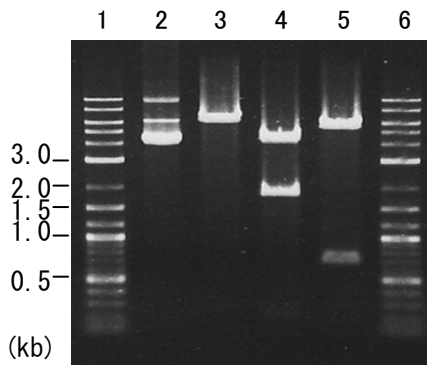


Plasmid name: pET25b\_Tr-cel61b-His (RDB No. 8317)  
Alternative name: pET25b\_Tr020-His  
Backbone plasmid: pET25b  
Selection: ampicillin  
Plasmid size: 6243 bp  
CDS size: 690 bp

## 1. Restriction enzyme digestion

Working #: BM0098

reaction volume: 10 ul  
DNA: 300 ng of plasmid DNA  
restriction enzyme: 10 to 15 units



Lane

- 
- 1: Size marker
  - 2: uncut plasmid DNA
  - 3: plasmid DNA with *EcoRI* digestion  
(6243 bp)
  - 4: plasmid DNA with *Pst* I digestion  
(4387 and 1856 bp)
  - 5: plasmid DNA with *Sma* I digestion  
(5547 and 696 bp)
  - 6: Size marker
- 

Electrophoresis: 1% agarose gel, 1x TAE buffer  
Size marker: 2-Log DNA Ladder (250 ng/lane; Cat.# N3200L, NEB)