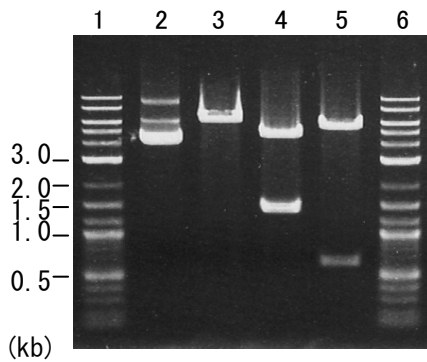


Plasmid name: pET25b\_Tr-xyn1-His (RDB No. 8312)  
Alternative name: pET25b\_Tr009-His  
Backbone plasmid: pET25b  
Selection: ampicillin  
Plasmid size: 6183 bp  
CDS size: 630 bp

## 1. Restriction enzyme digestion

Working #: BM0084

reaction volume: 10 ul  
DNA: 300 ng of plasmid DNA  
restriction enzyme: 10 to 15 units



Lane

- 1: Size marker  
2: uncut plasmid DNA  
3: plasmid DNA with *EcoRI* digestion  
(6183 bp)  
4: plasmid DNA with *Sca I* digestion  
(4732 and 1451 bp)  
5: plasmid DNA with *Sa/I* digestion  
(5547 and 636 bp)  
6: Size marker

Electrophoresis: 1% agarose gel, 1x TAE buffer  
Size marker: 2-Log DNA Ladder (250 ng/lane; Cat.# N3200L, NEB)