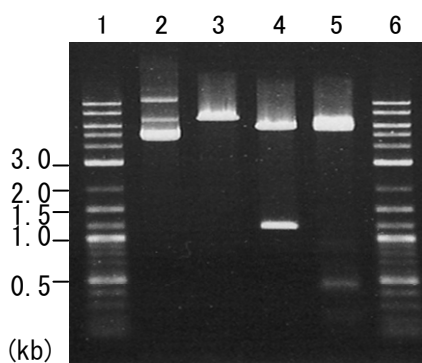


Plasmid name: pET25b_Tr-egl1-His (RDB No. 8308)
Alternative name: pET25b_Tr003-His
Backbone plasmid: pET25b
Selection: ampicillin
Plasmid size: 6864 bp
CDS size: 1311 bp

1. Restriction enzyme digestion

Working #: BM0082

reaction volume: 10 ul
DNA: 300 ng of plasmid DNA
restriction enzyme: 10 to 15 units



Lane

-
- 1: Size marker
 - 2: uncut plasmid DNA
 - 3: plasmid DNA with *EcoRI* digestion
(6864 bp)
 - 4: plasmid DNA with *Sac I* digestion
(5679 and 1185 bp)
 - 5: plasmid DNA with *Sma I* digestion
(5547, 480, 438, 228 and 171 bp)
 - 6: Size marker
-

Electrophoresis: 1% agarose gel, 1x TAE buffer
Size marker: 2-Log DNA Ladder (250 ng/lane; Cat.# N3200L, NEB)