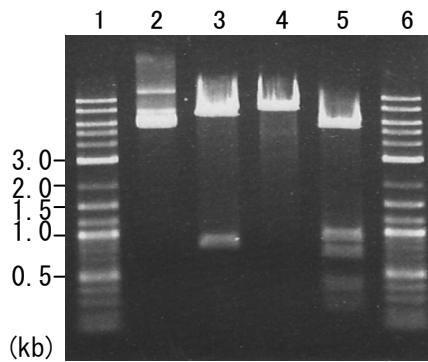


Plasmid name: pET21c_Tr-bgl1-His (RDB No. 8291)
Alternative name: pET21c_Tr008-His
Backbone plasmid: pET21c
Selection: ampicillin
Plasmid size: 7623 bp
CDS size: 2175 bp

1. Restriction enzyme digestion

Working #: BM0095

reaction volume: 10 ul
DNA: 300 ng of plasmid DNA
restriction enzyme: 10 to 15 units



Lane

- 1: Size marker
- 2: uncut plasmid DNA
- 3: plasmid DNA with *EcoRI* digestion
(6827 and 796 bp)
- 4: plasmid DNA with *HindIII* digestion
(7623 bp)
- 5: plasmid DNA with *SaI* digestion
(5441, 895, 690, 370 and 227 bp)
- 6: Size marker

Electrophoresis: 1% agarose gel, 1x TAE buffer
Size marker: 2-Log DNA Ladder (250 ng/lane; Cat.# N3200L, NEB)