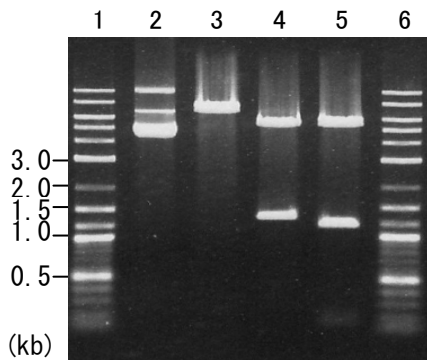


Plasmid name: pET21c\_Tr-cbh2-His (RDB No. 8287)  
Alternative name: pET21c\_Tr002-His  
Backbone plasmid: pET21c  
Selection: ampicillin  
Plasmid size: 6807 bp  
CDS size: 1359 bp

## 1. Restriction enzyme digestion

Working #: BM0104

reaction volume: 10 ul  
DNA: 300 ng of plasmid DNA  
restriction enzyme: 10 to 15 units



Lane

- 
- 1: Size marker
  - 2: uncut plasmid DNA
  - 3: plasmid DNA with *EcoRI* digestion  
(6807 bp)
  - 4: plasmid DNA with *HindIII* digestion  
(5461 and 1346 bp)
  - 5: plasmid DNA with *SmaI* digestion  
(5441, 1189 and 177 bp)
  - 6: Size marker
- 

Electrophoresis: 1% agarose gel, 1x TAE buffer  
Size marker: 2-Log DNA Ladder (250 ng/lane; Cat.# N3200L, NEB)