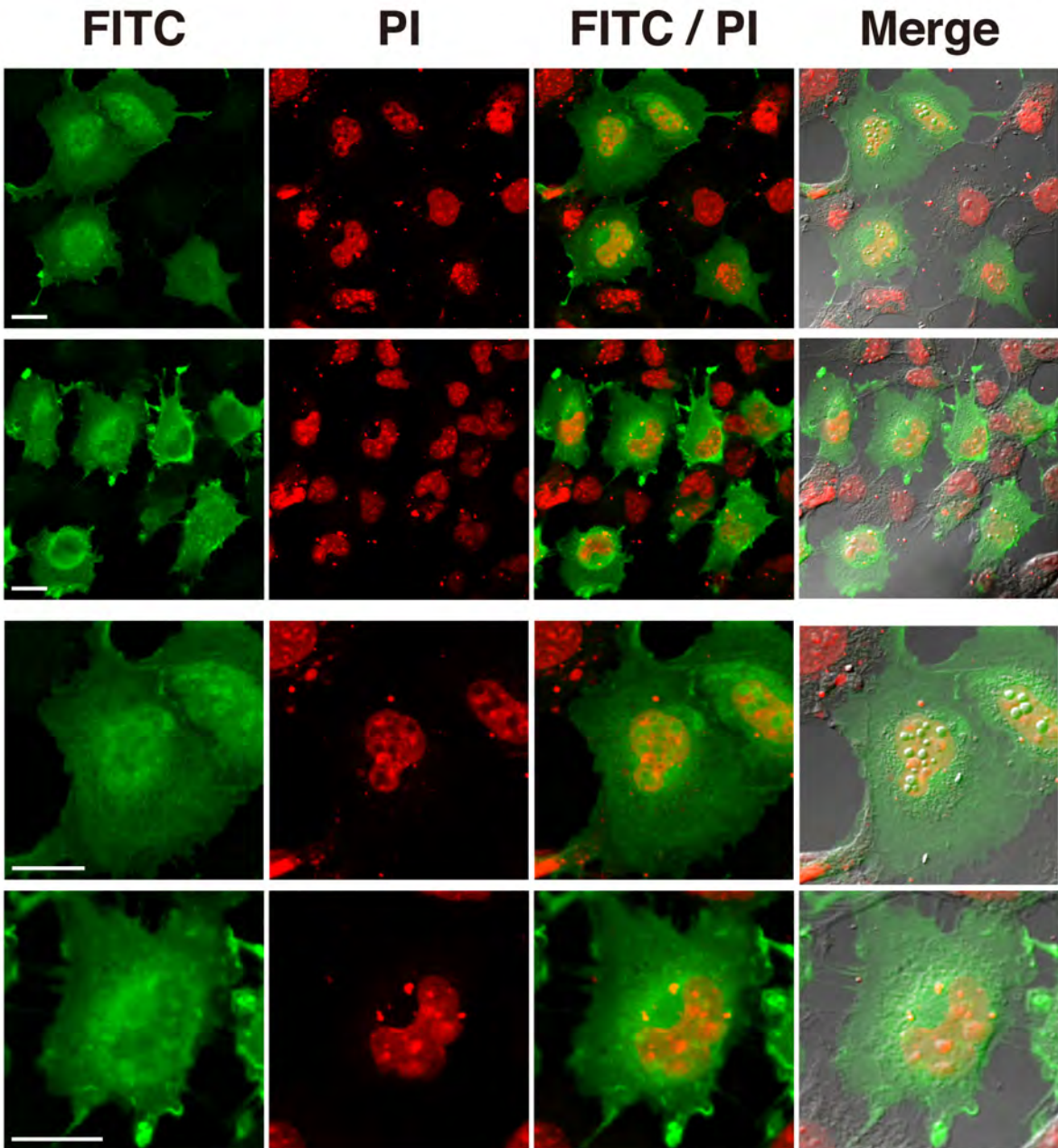


# SET-0254 (RDB. 7026)

Kazumasa Aoyama

COS-1 cells (IMDM+1%FBS+4%BS)  
Transfection (Jun 1, 2009): DNA 1 $\mu$ g  
Fixation: 4% paraformaldehyde (24 h after transfection)  
Staining (Jun 4, 2009)  
anti-FLAG antibody (x1000)  
FITC-anti-mouse IgG+M (x500)  
propidium iodide



Bars, 20  $\mu$ m

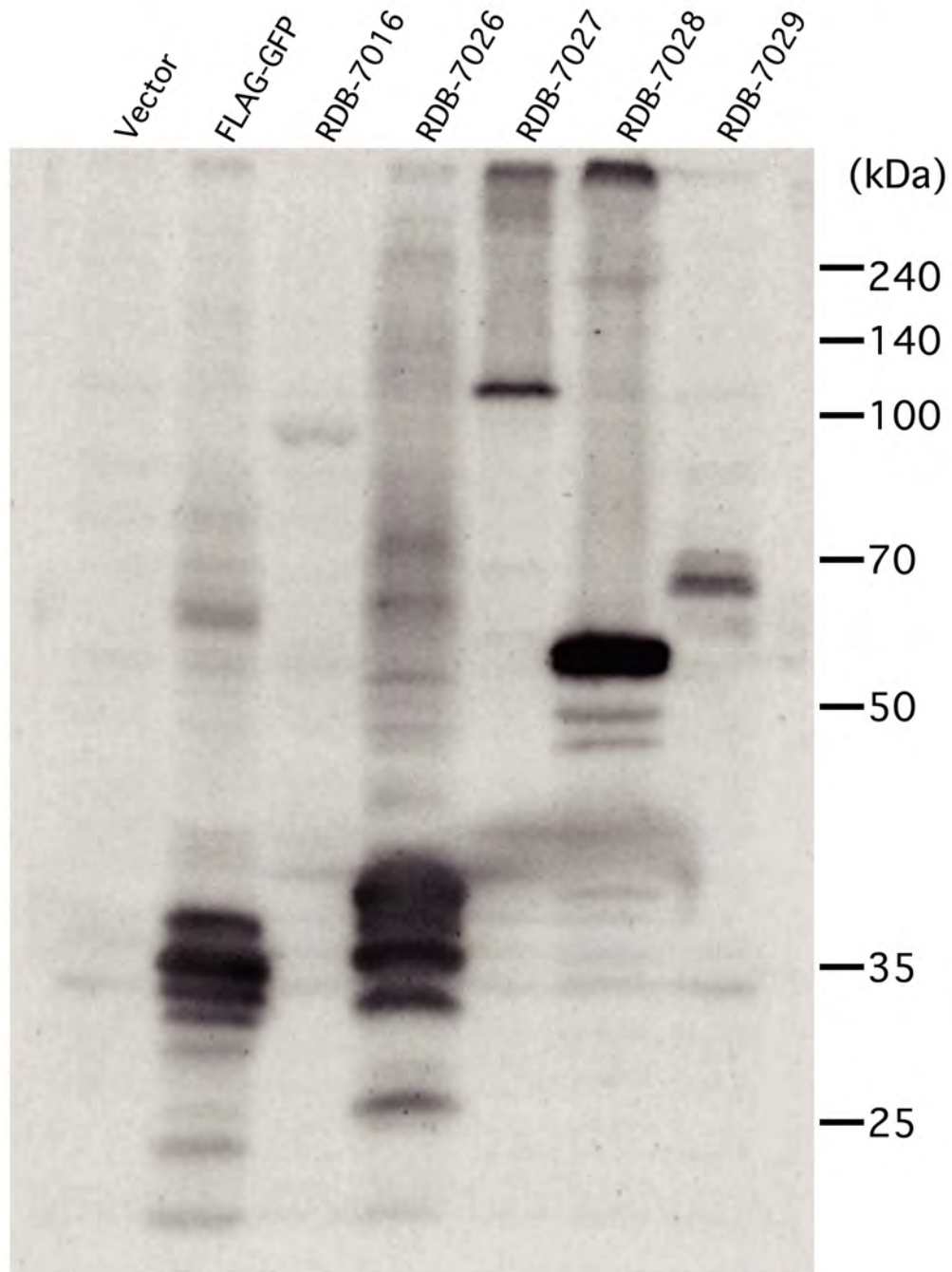
## RDB-7016, 7026-7029

Yasuyuki Hattori

COS-1 cells (IMDM+4%BS, 1%FBS)

Transfection: DNA 1ug

Harvest: 48 hr after transfection



10 % acrylamide gel

Blocking: 5% skim milk in TBS-T

1st antibody: anti-FLAG M2 mAb (x2000)

2nd antibody: anti- mouse IgG-HRP (x4000)