

SET-0168 (RDB.7020)

Sho Kubota

COS-1 cells

Medium: IMDM+1%FBS / 4%BS)

Transfection: May 26, 2009, DNA 3 μ g

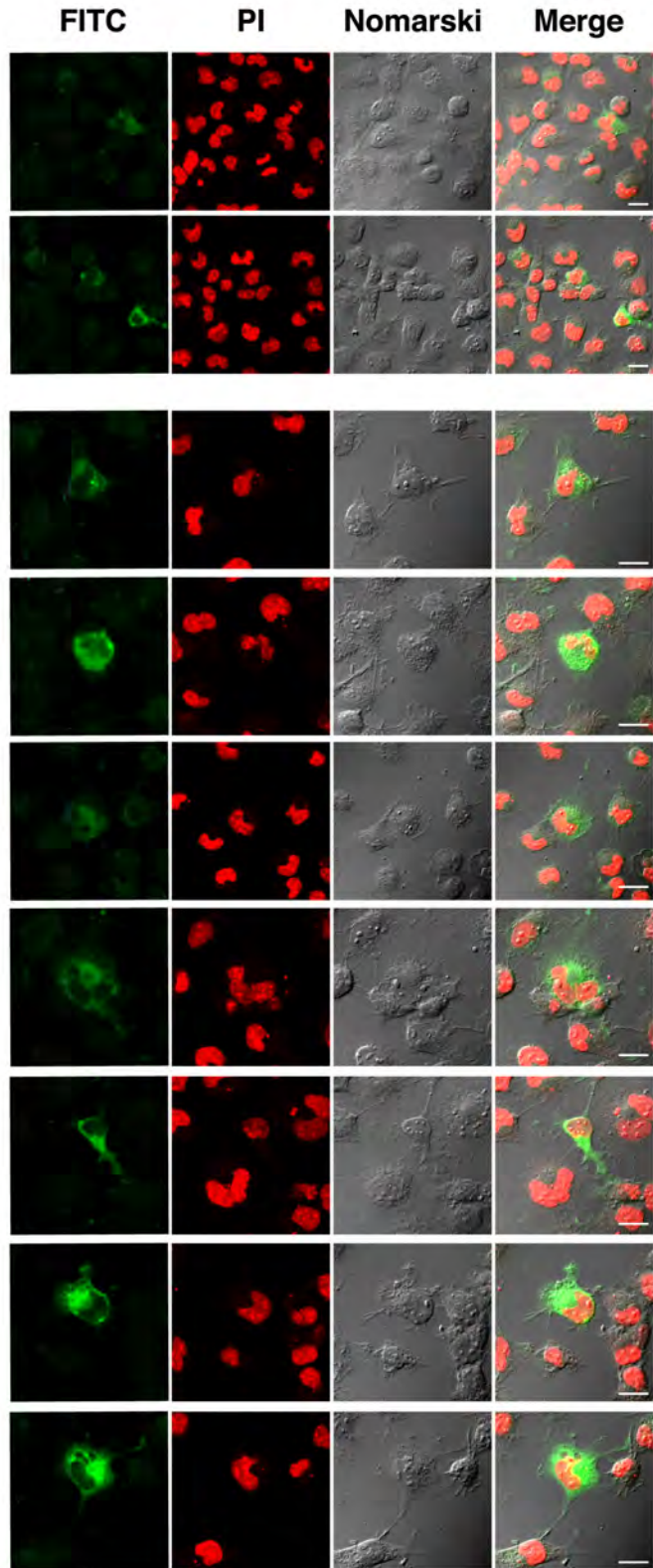
Fixation: 4% paraformaldehyde
(24 h after transfection)

Staining: May 27, 2009

anti-FLAG antibody (x1000)

FITC-anti-mouse IgG+M (x500)

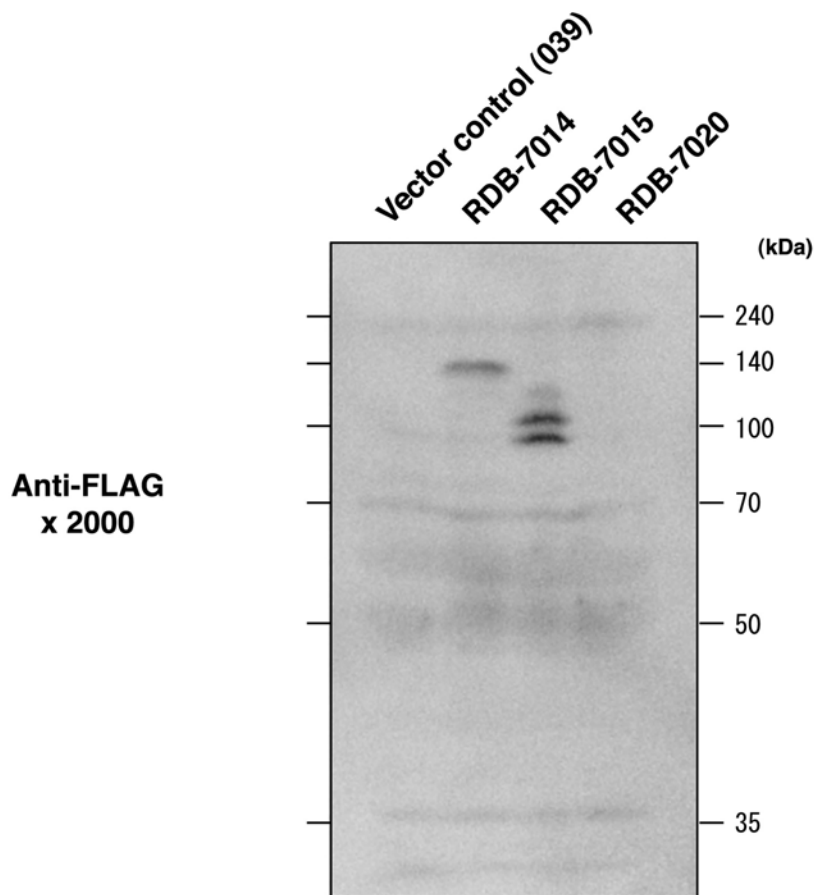
propidium iodide



Bars, 20 μ m

Western blotting
RDB-7014
RDB-7015
RDB-7020

Cells: COS-1 cells, 6×10^4 cells/35-mm dish
Transfection: 5.0 μg DNA/dish
Lysate sample: 090723
SDS-PAGE: 10% running gel



Anti-mouse IgG-HRP x 4000

DNAサンプル濃度

Vector control (039): 2.3 $\mu\text{g}/\mu\text{L}$ (精製済み)

RDB-7014: 0.9 $\mu\text{g}/\mu\text{L}$ (精製済み)

RDB-7015: 2.6 $\mu\text{g}/\mu\text{L}$ (精製済み)

RDB-7020: 2.7 $\mu\text{g}/\mu\text{L}$ (精製済み)