

RDB.7019 (SET-0137)

Yasuyuki Hattori

COS-1 cells (IMDM+4%BS, 1%FBS)

Transfection: DNA 1 μ g

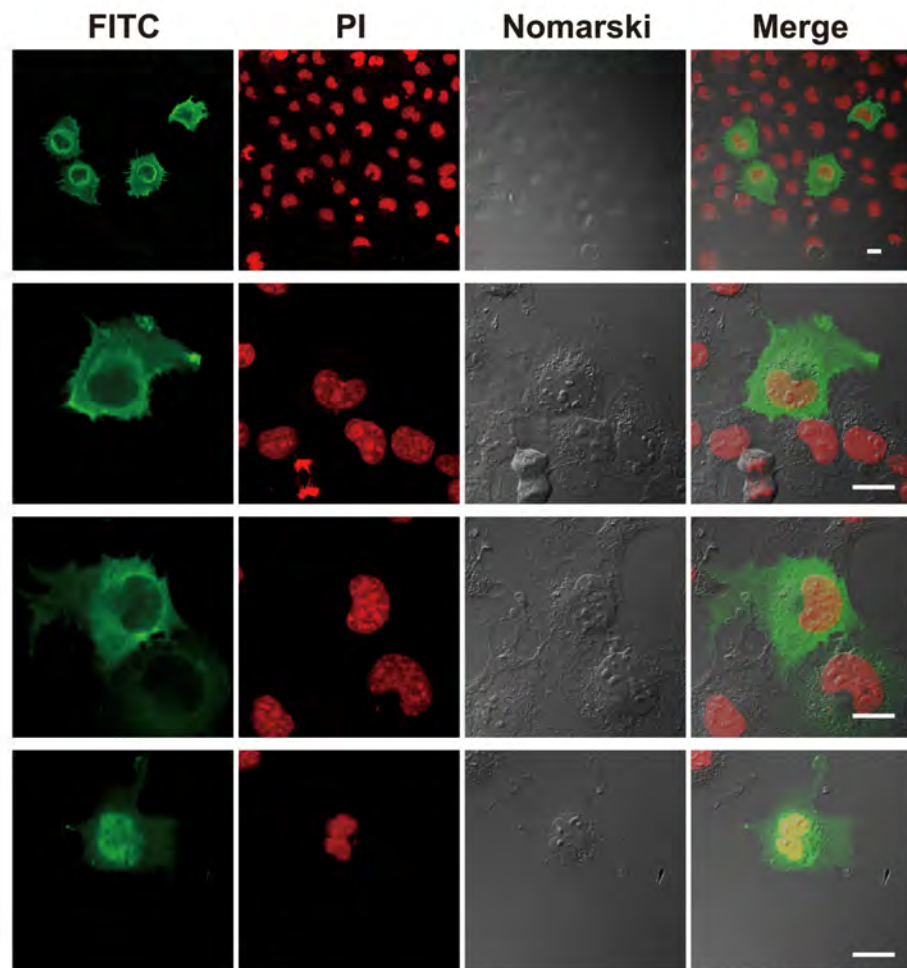
Fixation: 4% PFA (24 hr after transfection)

Staining:

anti-FLAG antibody (x1000)

FITC-anti-mouse IgG+M (x500)

propidium iodide



Bars, 20 μ m

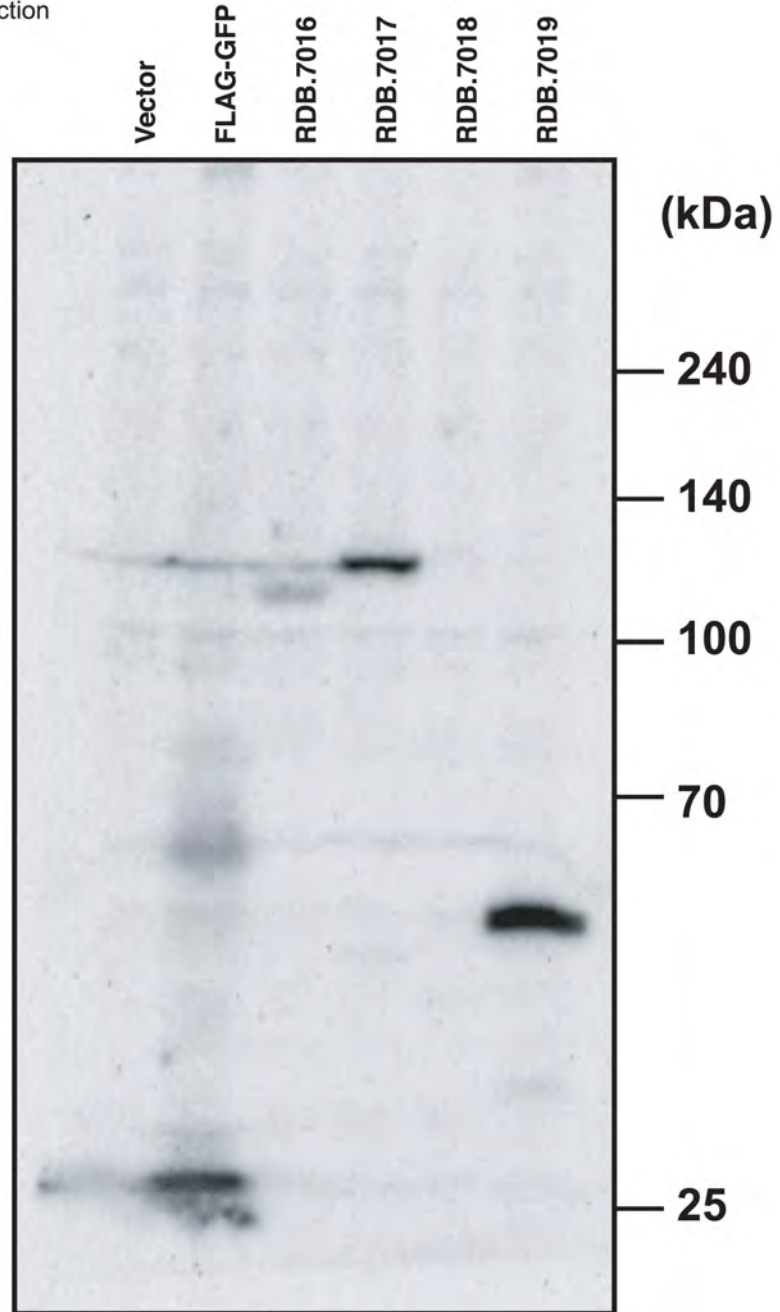
RDB.7016-7019

Yasuyuki Hattori

COS-1 cells (IMDM+4%BS, 1%FBS)

Transfection: DNA 1 μ g

Harvest: 48 hr after transfection



Blocking: 5% skim milk in TBS-T

1 st antibody: anti-FLAG M2 mAb (x2000)

2 nd antibody: anti-mouse IgG-HRP (x4000)