

RDB-7018 (SET-0132)

Yasuyuki Hattori

COS-1 cells (IMDM +4% BS, 1% FBS)

Transfection: DNA 5 ug

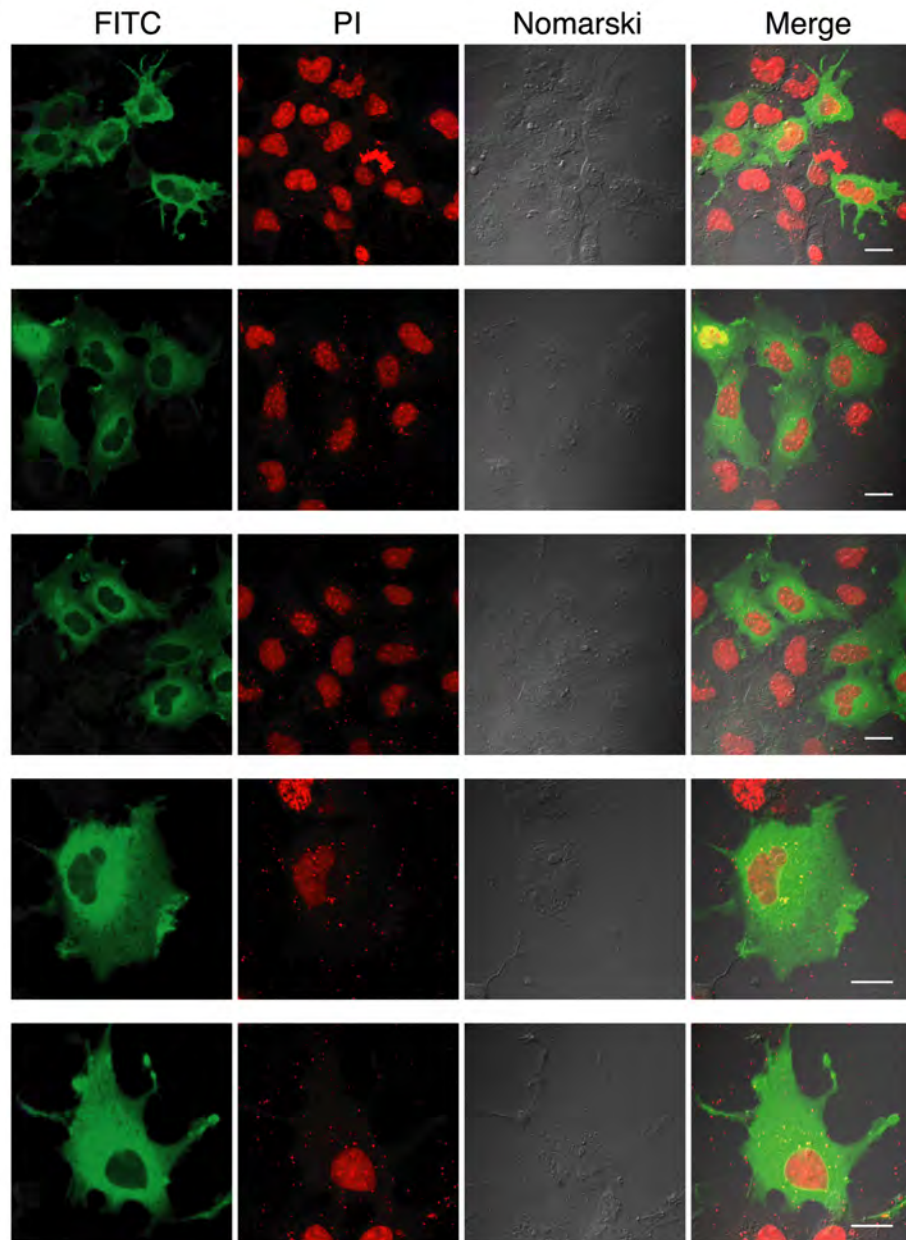
Fixation: 4% PFA (12 hr after transfection)

Staining

anti-FLAG antibody (x1000)

FITC-anti-mouse (x500)

propidium iodide



Bars, 20 um

RDB-7018 (SET-0132)

Yasuyuki Hattori

COS-1 cells (IMDM +4% BS, 1% FBS)

Transfection: DNA 5 ug

Harvest: 12 hr after transfection

Blocking: 5% skim milk in TBS-T

1st antibody: anti-FLAG antibody (x2000)

2nd antibody: anti-mouse IgG-HRP (x4000)

