

Cells: COS-1 cells,  $6 \times 10^5$  cells/well of 12-well plate

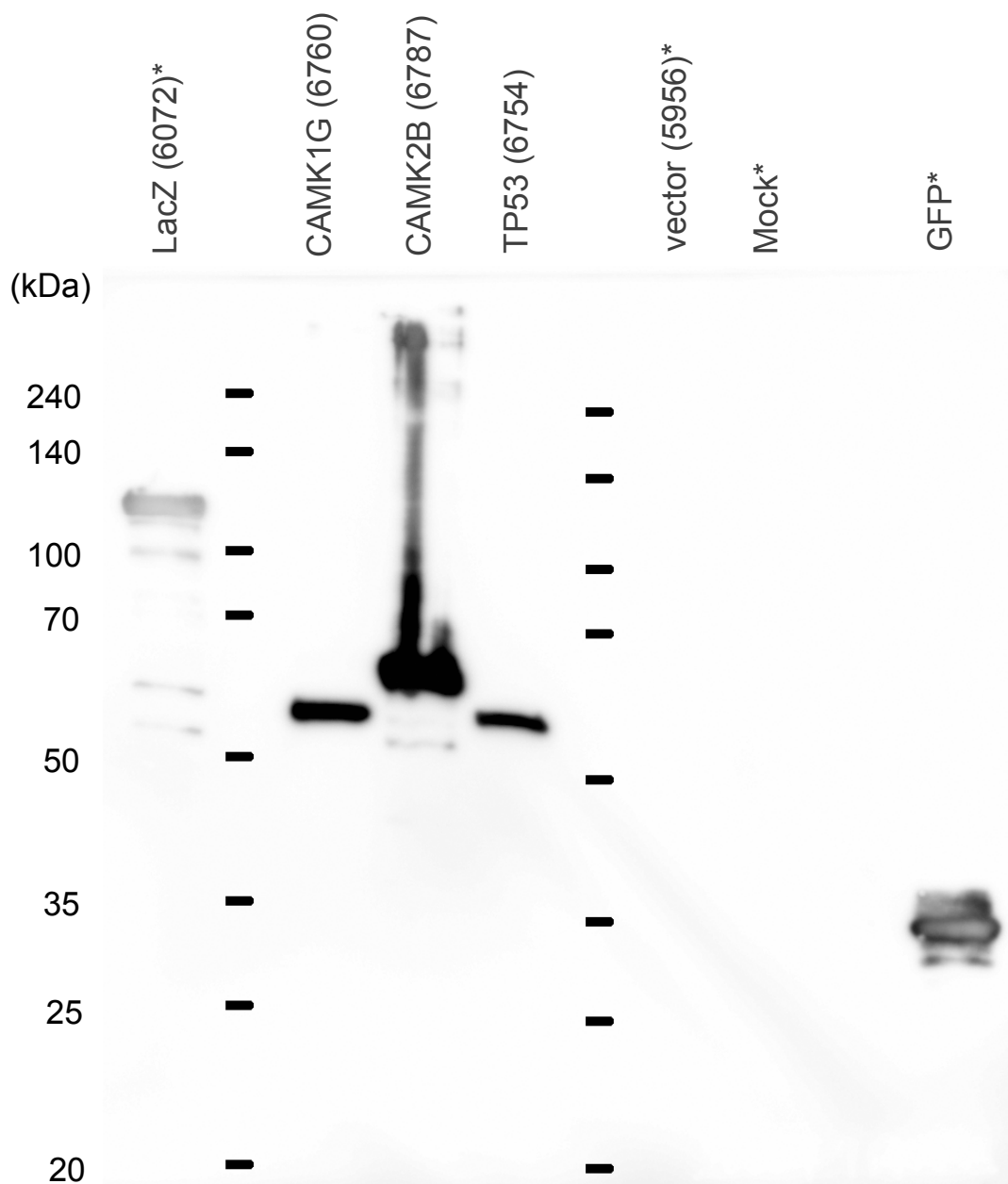
Transfection: 1.0  $\mu$ g DNA/dish

Assay date: 080711

Apply:  $2 \times 10^4$  cells equivalent/well

\*  $5 \times 10^5$  cells equivalent/well

SDS-PAGE: 10% running gel



Anti-FLAG x5,000

Anti-mouse IgG-HRP x5,000  
ECL plus x min expose