

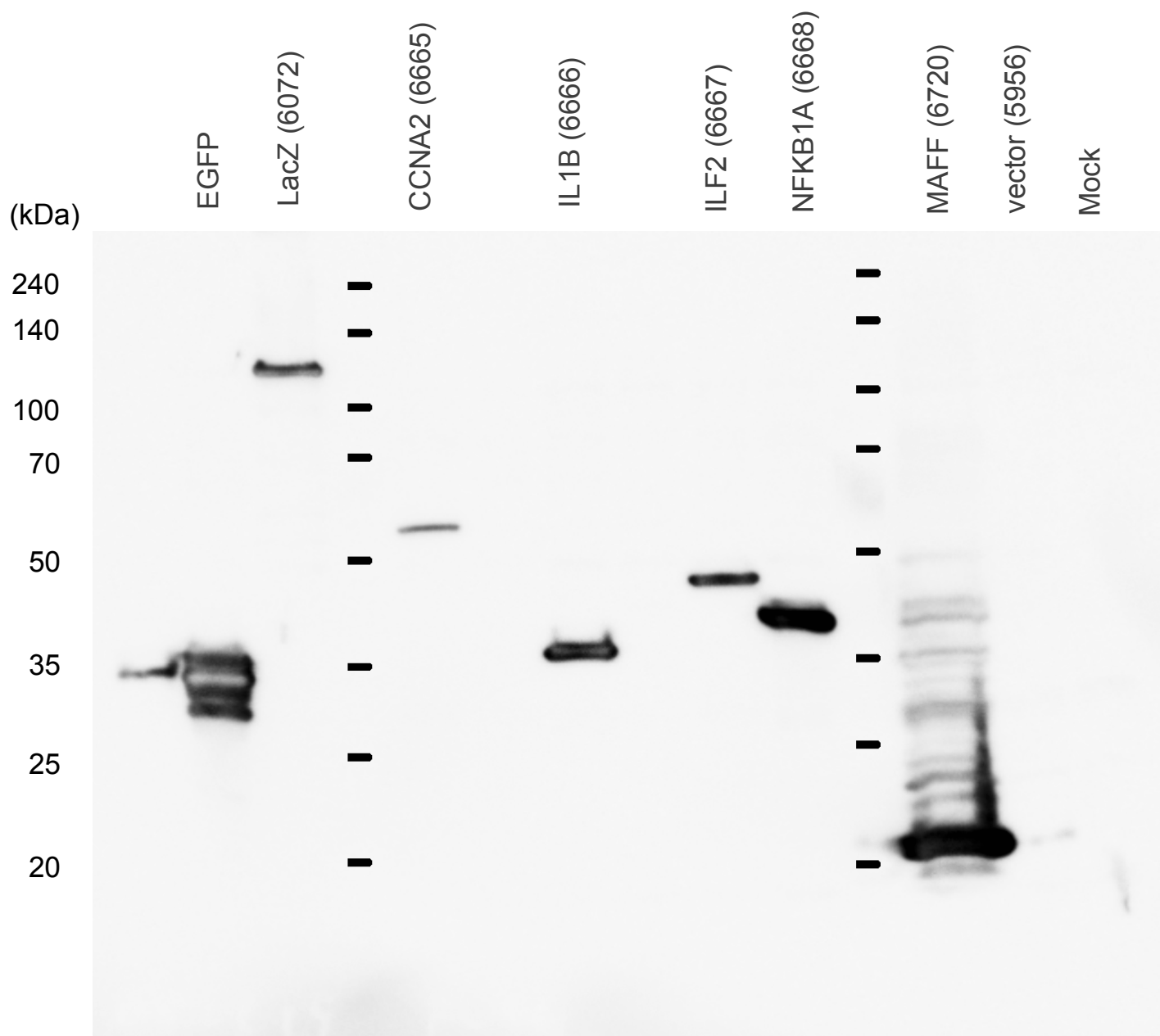
Cells: COS-1 cells, 6×10^5 cells/well of 12-well plate

Transfection: 1.0 μ g DNA/dish

Assay date: 080620

Apply: 2×10^4 cells equivalent/well

SDS-PAGE: 10% running gel



Anti-FLAG x5,000

Anti-mouse IgG-HRP x5,000
ECL plus 8 sec expose