

# SET-0224 (RDB 6601)

Aya Okamoto

COS-1 cells (IMDM + 4% BS + 1% FBS)

Transfection (June 8, 2009) DNA 1.0  $\mu\text{g}$

Fixation; 4% paraformaldehyde

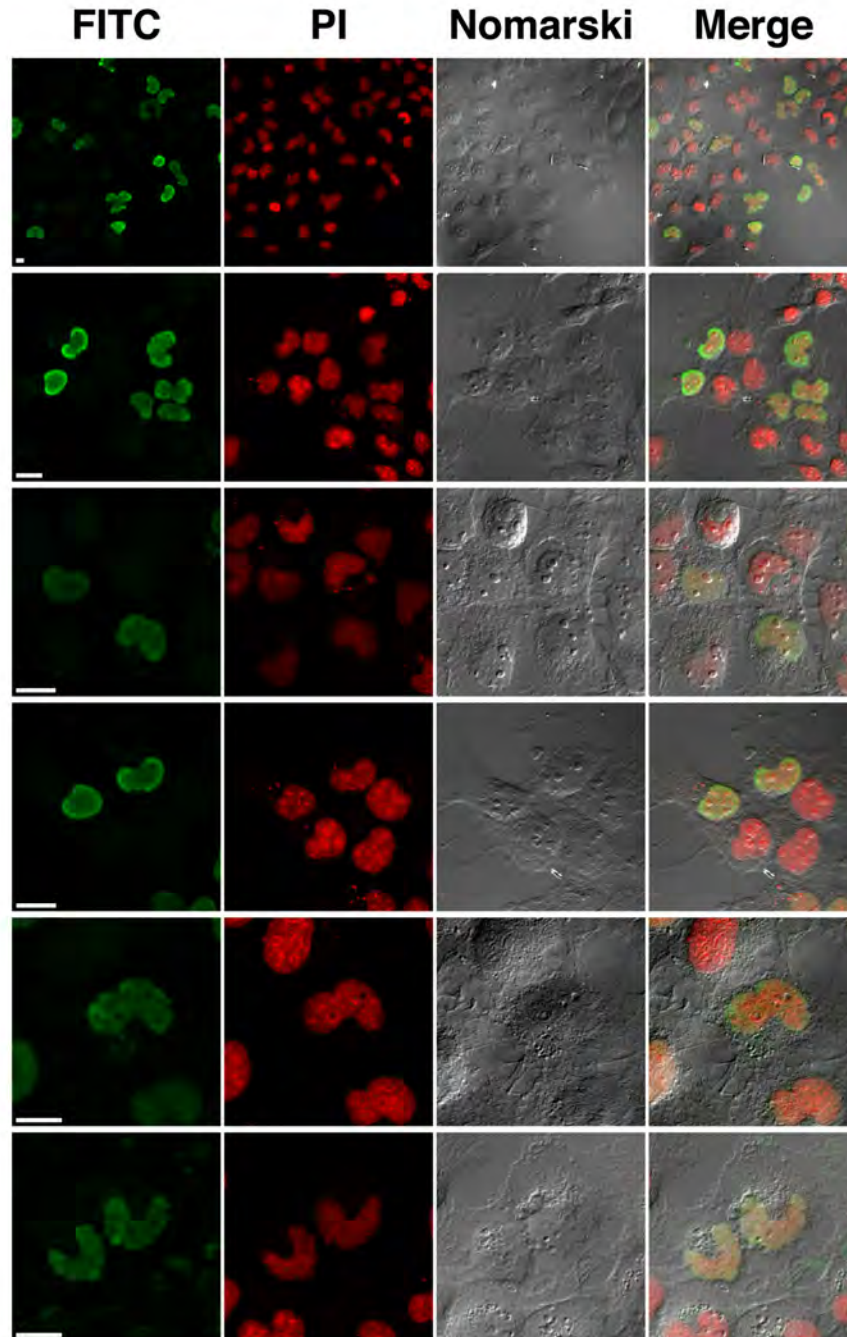
24 h after transfection

Staining (June 11, 2009)

anti-FLAG antibody (x 1000)

FITC-anti-mouse IgG + IgM (x 500)

Propidium Iodide (50  $\mu\text{g}/\text{mL}$ )



bars; 20  $\mu\text{m}$

# SET-0224 (RDB 6601)

# SET-0226 (RDB 6602)

COS-1 cells (IMDM + 4% BS + 1% FBS)

Transfection (June 22, 2009) DNA 1.0  $\mu$ g

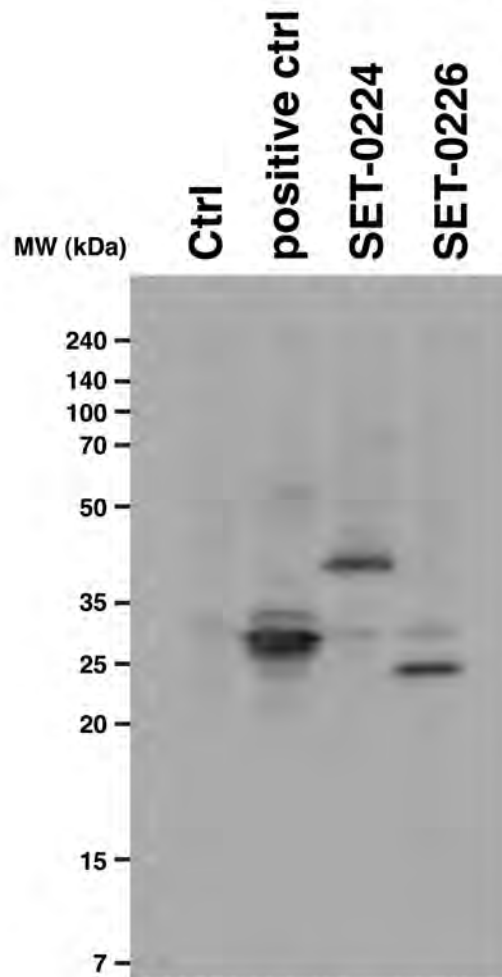
Harvest; 2 x R, 50  $\mu$ L

48 h after transfection

SDS-PAGE; Lower gel 12%

Western blotting; anti-FLAG antibody (x 2000)

anti-mouse IgG-HRP (x 4000)



1 sec

Cells: COS-1 cells,  $6 \times 10^5$  cells/well of 12-well plate

Transfection: 1.0  $\mu$ g DNA/dish

Assay date: 080502

Apply:  $6 \times 10^4$  cells equivalent/well

SDS-PAGE: 10% running gel

