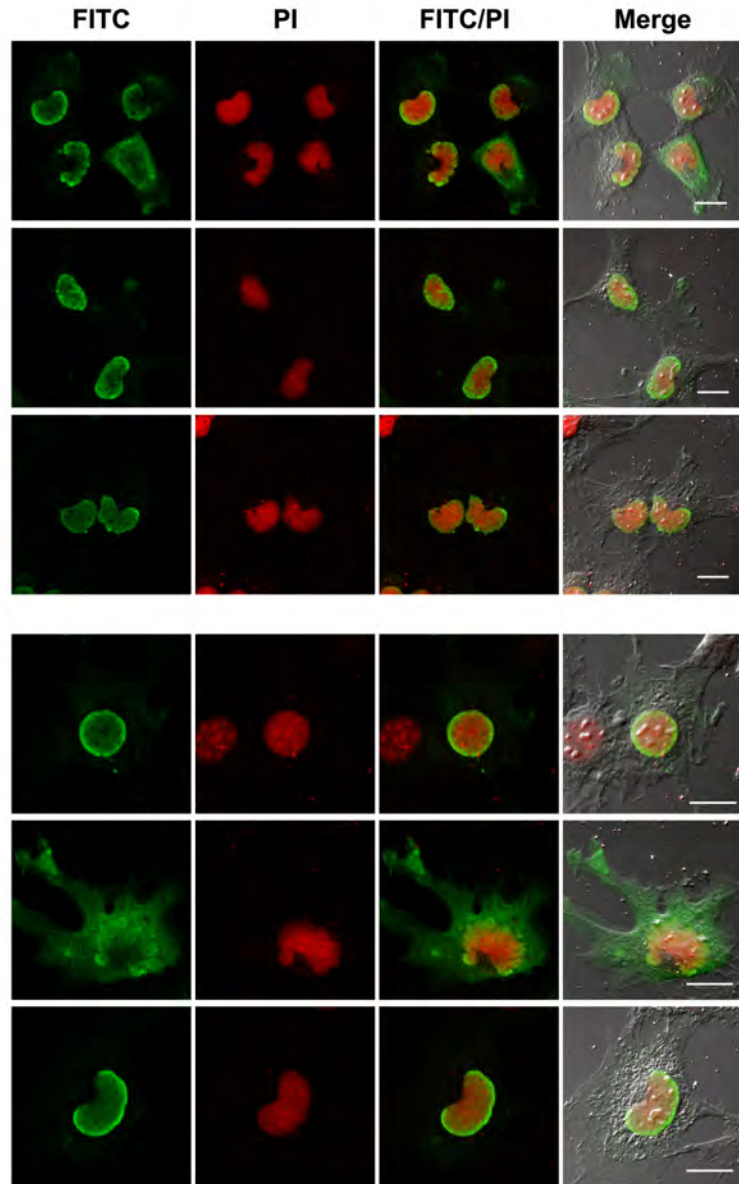


RDB.6598 (SET-0212)

Yuki Matsui

COS-1 cells (IMDM+1% FBS/4% BS)
Transfection (May 18, 2009): DNA 1 μ g
Fixation: 4% paraformaldehyde
(24 h after transfection)

Staining (May 20, 2009)
anti-FLAG antibody (x1000)
FITC-anti-mouse IgG+M (x500)
propidium iodide

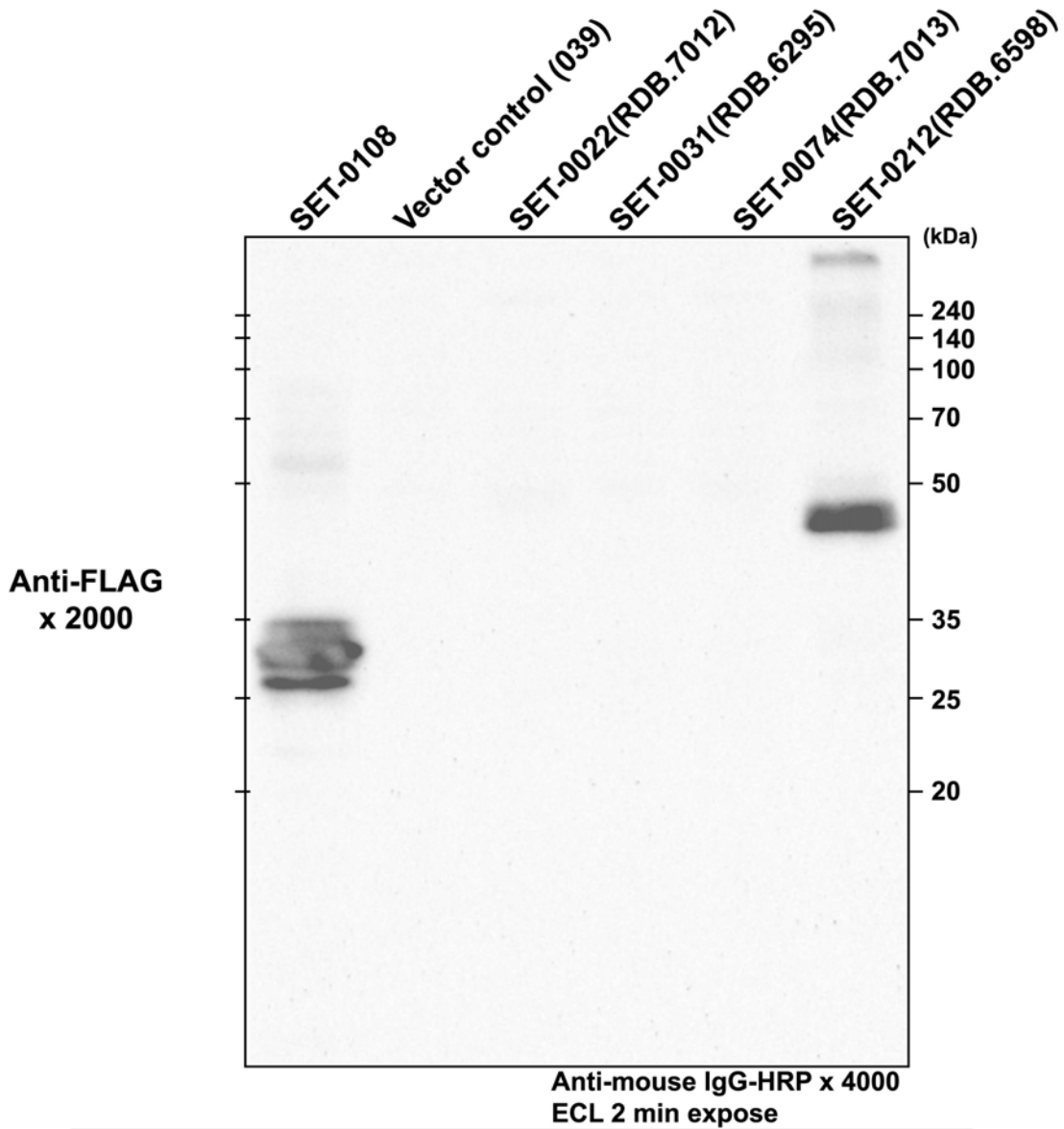


Bars, 20 μ m

Western blotting

SET-0022(RDB.7012)
SET-0031(RDB.6295)
SET-0074(RDB.7013)
SET-0212(RDB.6598)

Cells: COS-1 cells, 6×10^4 cells/35 mm dish
Transfection: 1.0 μg DNA/dish
Lysate sample: May 14, 2009
SDS-PAGE: 12% running gel



DNA conc.

Vector control (039): 2.3 $\mu\text{g}/\mu\text{L}$ (精製済み)
SET-0108: 1.3 $\mu\text{g}/\mu\text{L}$ (精製済み)
SET-0022(RDB.7012): 1.7 $\mu\text{g}/\mu\text{L}$ (精製済み)
SET-0031(RDB.6295): 2.2 $\mu\text{g}/\mu\text{L}$ (精製済み)
SET-0074(RDB.7013): 3.27 $\mu\text{g}/\mu\text{L}$ (精製済み)
SET-0212(RDB.6598): 3.95 $\mu\text{g}/\mu\text{L}$

Cells: COS-1 cells, 6×10^5 cells/well of 12-well plate

Transfection: 1.0 μg DNA/dish

Assay date: 080502

Apply: 6×10^4 cells equivalent/well

SDS-PAGE: 10% running gel

