

Cells: COS-1 cells,  $6 \times 10^5$  cells/well of 12-well plate

Transfection: 1.0  $\mu$ g DNA/dish

Assay date: 080319

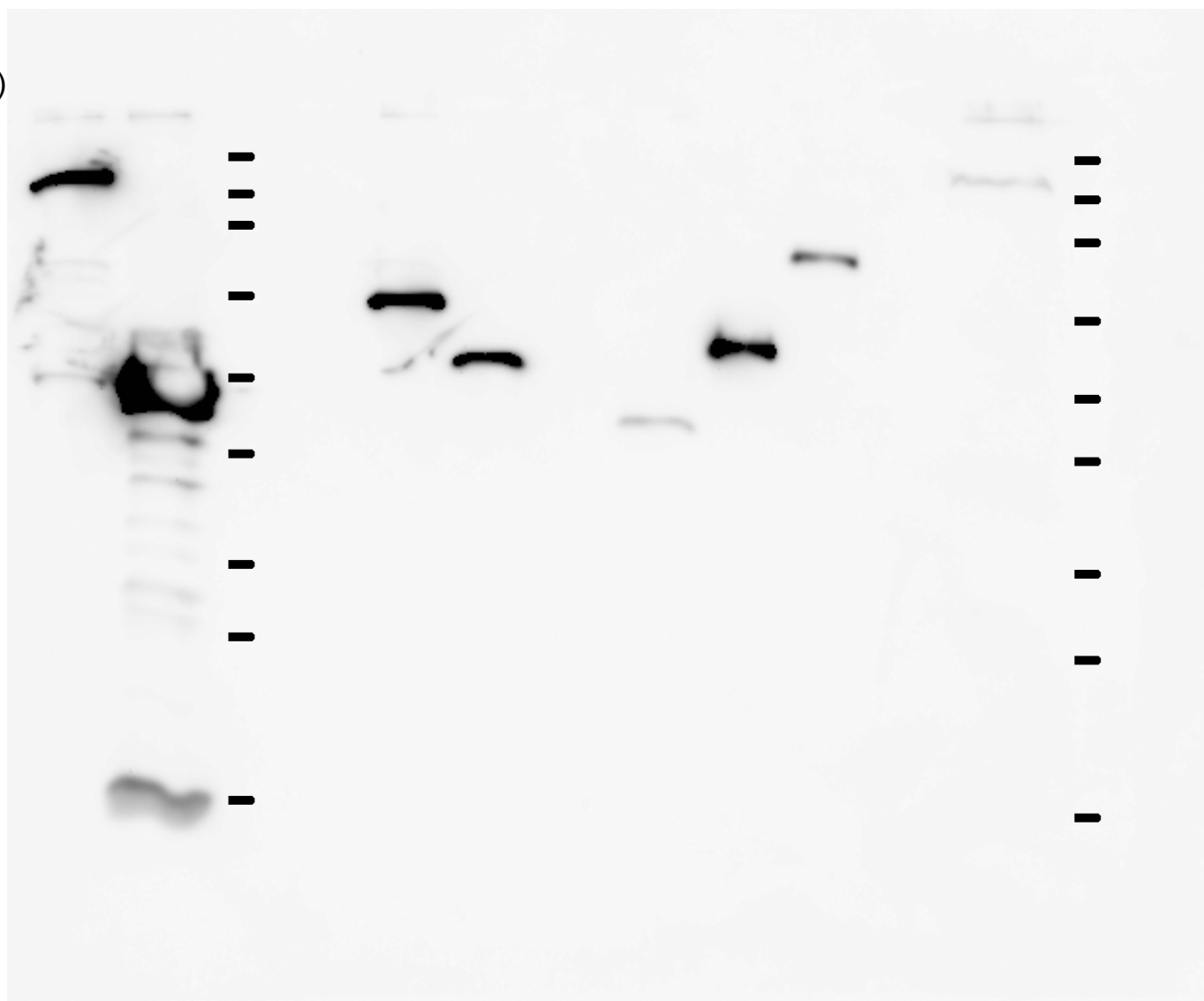
Apply:  $2 \times 10^4$  cells equivalent/well

SDS-PAGE: 15% running gel

LacZ (6072)      EGFP  
 CCNB2 (6415)    CCNH (6416)  
 SOX2 (6600)     KLF4 (6670)  
 Mock

(kDa)

140  
100  
70  
50  
35  
25  
20  
15



Anti-FLAG x5,000

Anti-mouse IgG-HRP x5,000  
ECL 40 min expose