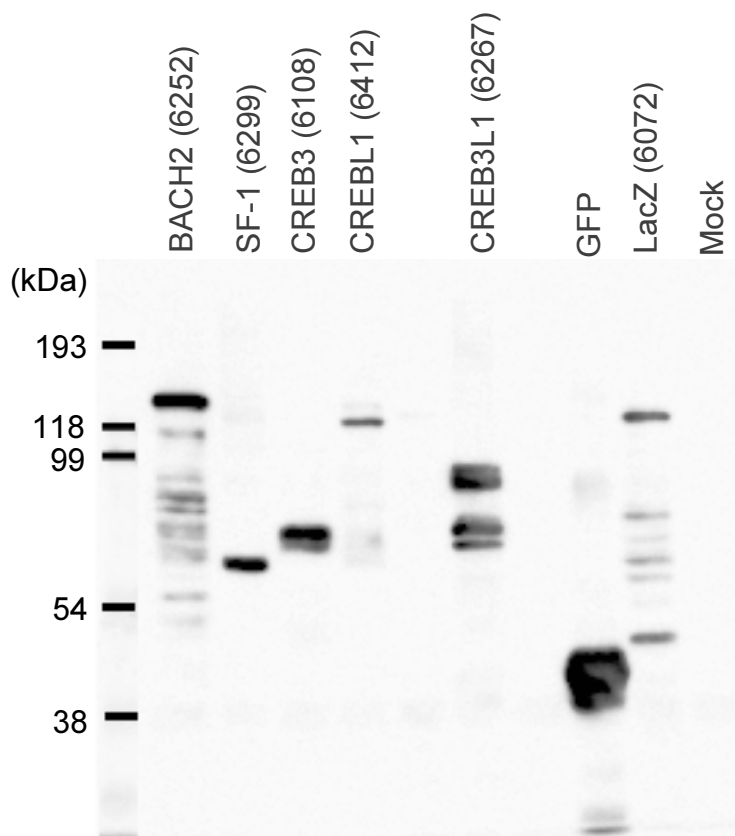


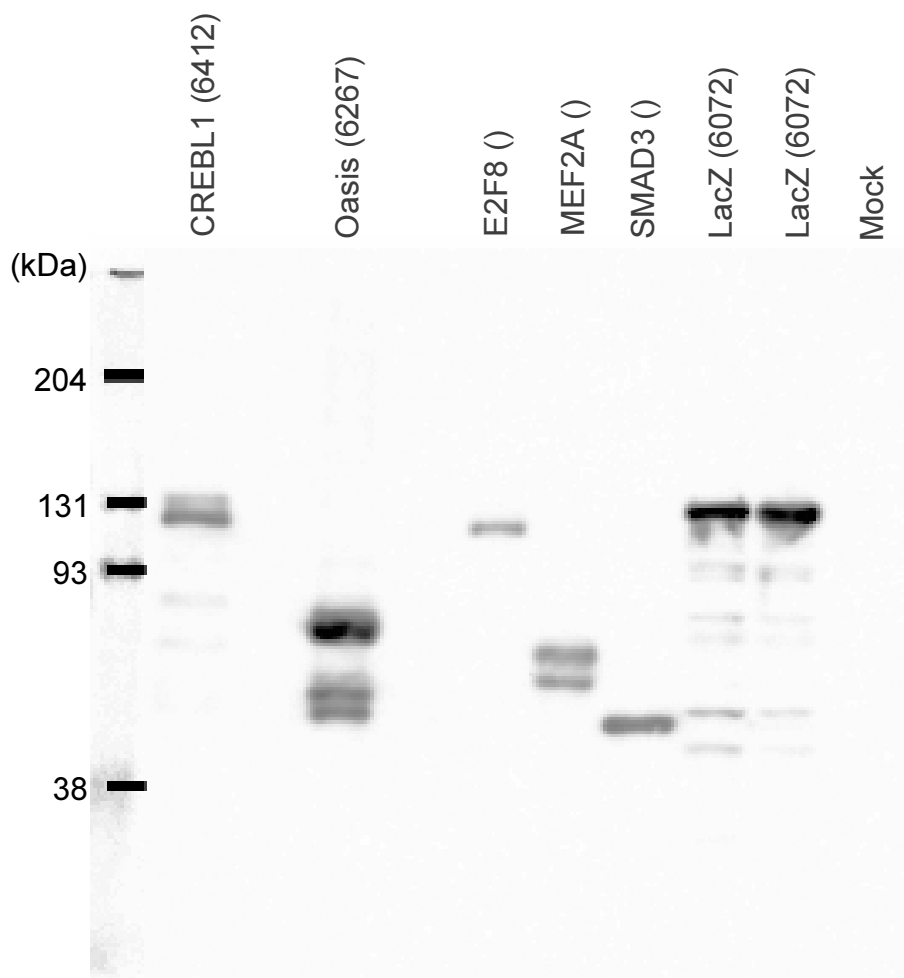
Cells: COS-1 cells,  $3 \times 10^5$  cells/well of 24-well plate  
Transfection:  $0.8 \mu\text{g}$  DNA/well  
Apply:  $3 \times 10^4$  cells equivalent/well  
SDS-PAGE: 10% running gel



Anti-FLAG x5,000

Anti-mouse IgG-HRP x5,000  
ECL plus 5 min expose

Cells: COS-1 cells,  $3 \times 10^5$  cells/well of 24-well plate  
Transfection:  $0.8 \mu\text{g}$  DNA/well  
Apply:  $3 \times 10^4$  cells equivalent/well  
SDS-PAGE: 8% running gel



Anti-FLAG x5,000

Anti-mouse IgG-HRP x5,000  
ECL plus 30 sec expose