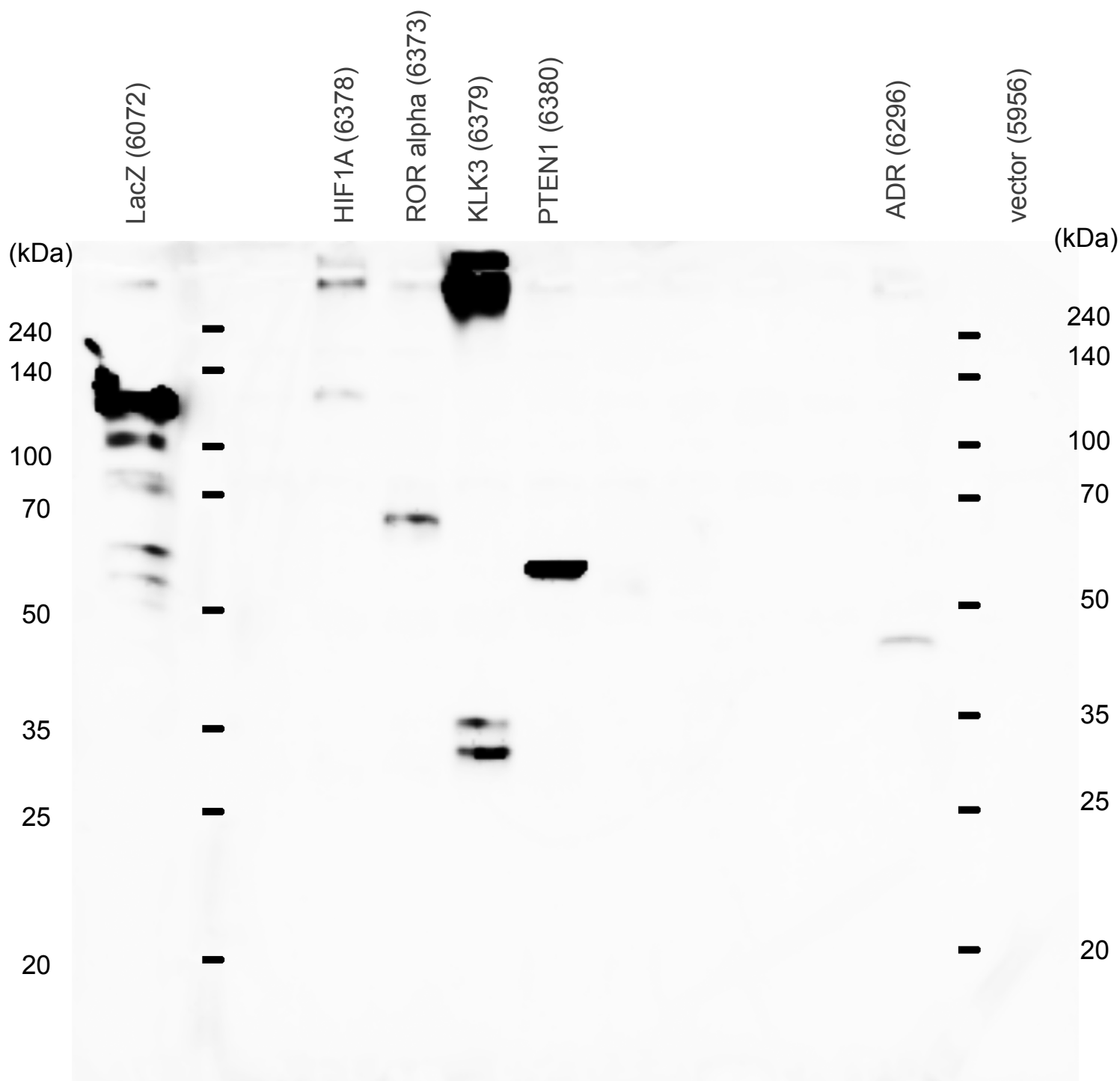


Cells: COS-1 cells,  $3 \times 10^5$  cells/well of 24-well plate  
 Transfection: 0.8  $\mu$ g DNA/well  
 Apply:  $9 \times 10^4$  cells equivalent/well  
 SDS-PAGE: 10% running gel



Anti-FLAG x5,000

Anti-mouse IgG-HRP x5,000  
 ECL plus 10 min expose