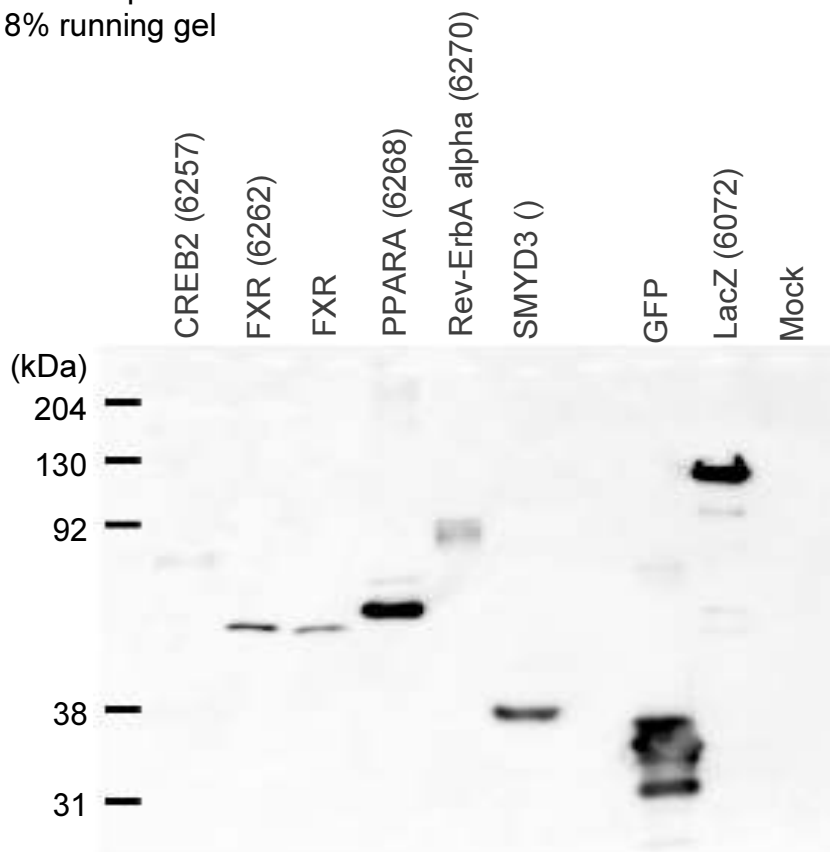


Cells: COS-1 cells, 3×10^5 cells/well of 24-well plate
Transfection: $0.8 \mu\text{g}$ DNA/well
Apply: 3×10^4 cells equivalent/well
SDS-PAGE: 8% running gel



Anti-FLAG x5,000

Anti-mouse IgG-HRP x5,000
ECL plus 10 min expose