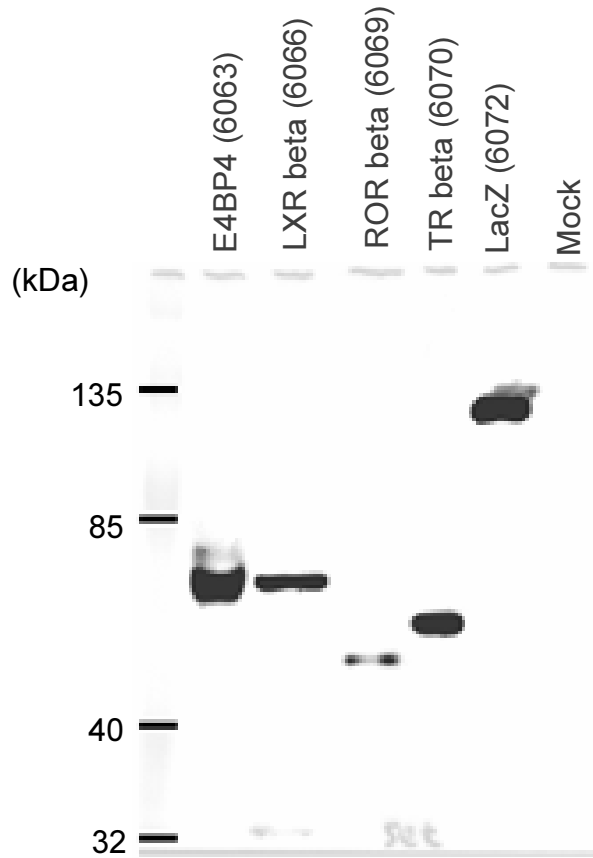


Cells: COS-1 cells, 3×10^5 cells/well of 24-well plate
Transfection: $0.8 \mu\text{g}$ DNA/well
Apply: 3×10^4 cells equivalent/well
SDS-PAGE: 7% running gel



Anti-FLAG x5,000

Anti-mouse IgG-HRP x5,000
ECL plus 1 min expose

RDB6069 (SET-0092)

Yuji Nakayama

COS-1 cells

Medium : IMDM + 1% FBS, 4% BS

Transfection : 1 µg DNA, Sept 16, 2009

Fixation : 4% paraformaldehyde, 24 h after transfection

Staining : Sept 17, 2009

Anti-FLAG : x1000

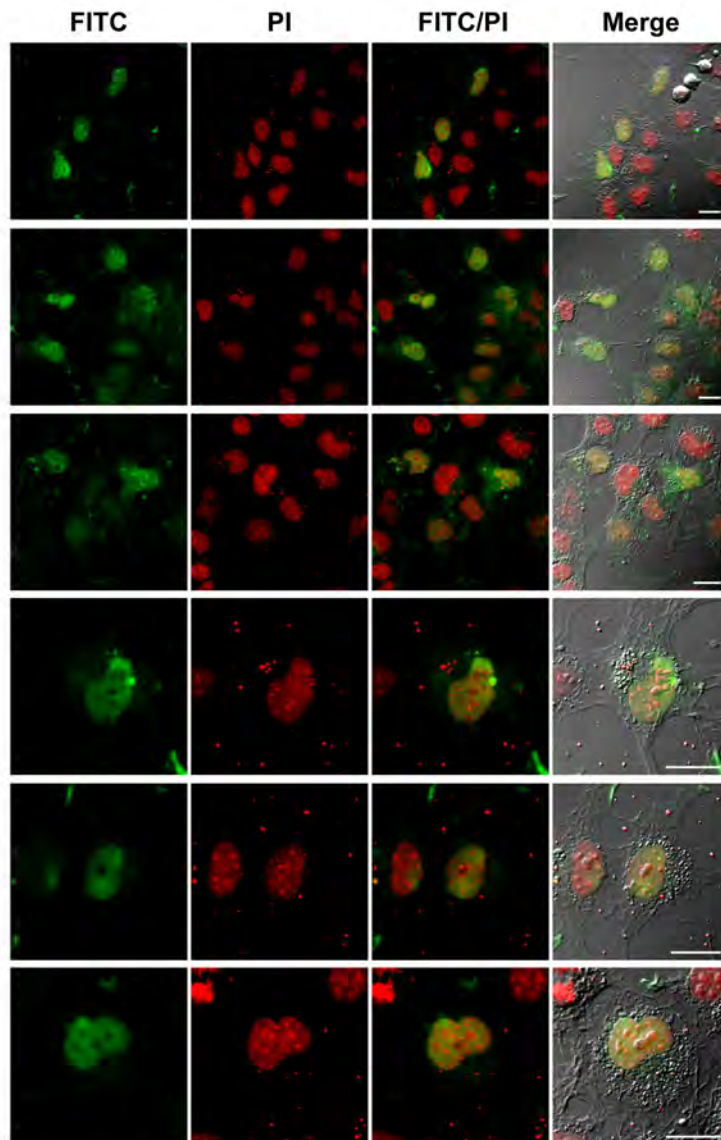
FITC-anti-mouse IgG+M : x500

Propidium iodide

ROR beta, NM_006914, 51.8 kDa

RAR-related orphan receptor B (RORB).
[UniProtKB/TrEMBL
Q58EY0 (Q58EY0_HUMAN)]

The protein encoded by this gene is a member of the NR1 subfamily of nuclear hormone receptors. It is a DNA-binding protein that can bind as a monomer or as a homodimer to hormone response elements upstream of several genes to enhance the expression of those genes. The specific functions of this protein are not known, but it has been shown to interact with NM23-2, a nucleoside diphosphate kinase involved in organogenesis and differentiation.



Bars, 20 µm